

☎ 019-750 0612

JUL-SEPT 2023 CATALOGUE VOL.13



# SILVERCARE

News And Insight For Elderly And Post Discharge Care

MUSCLE WEAKNESS

## Sarcopenia

Affects 1 in every 4 elderly  
A Silent Killer **after age of 40!**

### MUSCLE RECOVERY Solutions!

The key is the combination of Nutrition & Exercise



Nationwide!

**FREE**  
Muscle Strength Assessment



**Join & Win**



Gintell G-Feetle  
Multifunctional Foot Massager

UP TO RSP RM **11,440**

**UP TO RM6,000 TAX RELIEF**

Cost of basic supporting equipment for disabled self, spouse, child or parent.



Mimitakara®

**BES+MADE**  
Modernity with great care and finesse



100067156

# CONTENTS

## 3 The Story Behind Silvercare



One stop solution for elderly care & post-discharge care from the aspects of medicines, nutritions, physiotherapy, rehabilitation equipments and many innovative services.

## 4 Sarcopenia

Muscle loss with aging.  
A Silent Killer after age of 40!

## 11 Be Our Silvercare Member

**55**  
Years Old  
And Above



• How to join?

## Exclusive Benefits For Silvercare Member

### Join & Engage With Us

- Silvercare Facebook Groups
- Silvercare Family Gathering
- Special Promotion



### Extended 12 Months Warranty

- Only for Moven Wheelchair
- For Mobility Aids Exchanges
- For Reli-able Grab Bar

### Discount Service & Repair Charge

### FREE Glucometer & Blood Pressure Meter Check

### Buy More Get More Medi+ Unisex Adult Diapers Loyalty Program

## Special Event

### 9 FREE Muscle Strength Assessment

### 10 JOIN & WIN Multifunctional Foot Massager

### 59 Move In The Park

Join Us For An Enlightening Experience!



## Let's Learn Together

### 8 Muscle Recovery Solution!

The Key Is The Combination of Nutrition & Exercise

### 48 Why Installing Toilet Safety Handrail Is Important For Elderly At Home?

### 52 Pemilihan Alat Bantu Dengar Yang Sesuai

### 61 Understanding Stroke and Recovery

## Service

### Repair Wheelchair

Let's Make Your Wheelchair Safe & Comfortable To Use Again!

### Trade-In Wheelchair

Dah Lama Atau Rosak? Trade In Jer! Dapat Yang Baru!

### Trade-In Blood Pressure Meter

Your Meter Is Old? Spoilt? Not Accurate?

### Alpro HomeCare

Nurse Home Visit & Doctor Assessment

### Rental

- Manual Hospital Bed
- Electric Homecare Bed
- Electric Hospital Bed
- Ripple Mattress
- Oxygen Therapy
- Wheelchair
- Suction Pump
- Hearing Aids

### Alpro Home Physiotherapy

If Doctor Save Lives The A Physiotherapist Makes It Worth Living

### Alpro ePharmacy

We Deliver Medication Safety

### Alpro oncohelp

Affordable Chemo-Drugs Supply, Financial Aids and Subsidy Application

### Alpro Foundation

Do You Know If There's Anyone Who Needs Help? We Can Sponsor!

## Products

### Wheelchair

### Mobility Aids, Commode & Shower Chair

### Hospital Bed, Ripple Mattress & Mattress

### Bedridden Related Support

### Breathe Easy Oxygen Therapy

### Diaper & Underpad

### Home Monitoring

- Thermometer
- Blood Pressure Meter
- Glucometer

### Recovery Support

### Ugoku Knee Support

### Bathroom Safety Set-Up Grab Bar

### Heal Fast Wound Care

### Mimitakara Hearing Aids



# The Story Behind *Silvercare*

In February 2020, both parents of the founder of Silvercare, Pharmacist Chan, were involved in a car crash in Kuantan and were admitted to the hospital in a coma. When he received the call from the hospital, he was totally stunned and didn't know what to say because, at that very moment, he knew that he could have lost the two people he loved the most forever at the same time.

Upon reaching the hospital, it tore his heart to see how traumatized his parents were. His dad had to live on a respirator, and his mother couldn't even recognize him due to the internal bleeding in her brain. Fortunately, his mum finally remembered who he was after 5 days when her condition improved. But trust me, being forgotten by your mother is not an experience that you would ever want to go through again.

During his parents' recovery journey, he faced many problems that he needed to solve to ensure their fast recovery, such as getting their medicines, walking support, preparing their hospital bed, providing oxygen therapy, nutrition, diaper care, and figuring out the proper bathing method, among others.

This left him with a question: If you have no medical background, how in the world are you going to know what to prepare, where to get the equipment, and how to take care of elderly or bedridden patients?

Hence, he decided to set up Silvercare division in Alpro pharmacy all around Malaysia with the aim of helping more people like him.

## What is the specialty of Alpro Silvercare?

One Stop Solution for Elderly Care and Post-Discharge Care from the aspects of medicines, nutritions, physiotherapy, rehabilitation equipments and many innovative services.

*Filial Piety*<sup>™</sup>  
您养我小，我养您老。

## What is Filial Piety?

It is our slogan, which in Confucianism means a virtue of respect, love, support and to be good to one's parents and elders. In general, I hope to empower the idea of taking good care of our parents and elders, just like they take good care of us when we were small.

**Our vision** is to minimize any suffering experienced by elderly or post-discharged patient and maximize their sense of wellness.



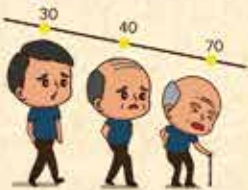
# Sarcopenia?

**Muscle loss with aging.  
A Silent Killer after age of 40!**



Written by :  
**Ms. Pearly,**  
Physiotherapist

**As** we hit age of 40s, our bodies will start to lose muscle mass, strength and function, leading to age-related muscle loss, known as **"Sarcopenia"**.



The condition worsens as muscle loss speeds up around the age of 70, with a loss of 10-15% of muscle mass each decade. This sarcopenia condition commonly affects the elderly.

**" Evidence suggests that 1 in every 4 older adults aged 60 and above is affected by sarcopenia "**

## What Could Have Happened?

This is a major factor in increased frailty, falls and fractures, and can lead to hospitalizations and surgeries, which increase the risk of complications, including death.

Most people might not "feel" the muscle loss. In fact, as our muscle mass decreases, our body's metabolism also slows down. This can interrupt normal metabolism of blood cholesterol and sugar, causing accumulation in the body and increasing the risk of cardiovascular disease, diabetes and eventually, the risk of death.

## What Caused That?

Sarcopenia can be caused by several factors. Aging, reduced physical activity, and poor nutrition are among the major causes.

**" In a study of 12 countries, almost two-thirds of older study participants were identified as being at malnourished "**

In addition, chronic diseases like diabetes, an excessively low or high BMI, long-term use of medications (especially steroids), and a history of falls can also increase the risk of sarcopenia.

## Self-check for 5 Major Signs & Symptoms of Sarcopenia:

- 1 Reduced Walking Speed On Flat Ground**  
Unable to walk 6 meters in 8 seconds.
- 2 Difficulty Carrying Objects**  
Unable to carry a 5kg weight, such as cooking oil.
- 3 Weight Loss**  
Losing 5% body weight in 6 months.
- 4 Frequent Falls**  
Falling more than twice in a year.
- 5 Difficulty Moving**  
Needing support to get up from a chair or bed or needing frequent rest while climbing stairs or walking.

Does this sound familiar to you ?

If yes, then they may be at high risk of "Sarcopenia".



## Can We Solve The Problem?

The key is to detect signs and symptoms of muscle loss as early as possible, starting from the age of 40 onwards.

**Practicing the two keys of proper nutrition and exercise in combination** can help minimize the loss of lean mass and diminished strength that occurs with aging. However, either of them alone won't be sufficient.



Written by :  
Ms. Kelly Gan,  
Dietitian



Practicing the  
**2 Keys?**

## First Key: What to eat?

**1** **Sufficient Intake of Protein.**  
*Ensure that you have a sufficient intake of protein (1.0-1.2g/kg/day) everyday, as it is an essential nutrient for muscle growth.*

For example,



If you use 1.0g/kg/day as your standard and your weight is 50kg, then you should consume 50g of protein daily.

It is generally recommended to divide this protein intake into separate meals, with each meal containing about 15-17 grams of protein in the above case.

While high-quality protein sources such as chicken, fish, beef, eggs, and milk should be prioritized, but honestly, it may not be practical for all elderly individuals to calculate and consume accordingly. Factors such as reduced appetite, ability to chew, swallowing difficulties, and limited food accessibility can pose challenges.

In such cases, protein supplements can be a suitable alternative for the elderly to meet their daily protein requirement in addition to their current food intake. They only need to remember how many scoops to take per day to easily meet their protein needs.

Example of breakfast:

- 1 glass of milk (240ml) (7g protein)
- +
- 2 tablespoons oat
- +
- 1/2 scoop of metabolic oteine protein powder (3g protein)
- +
- 1 boiled egg (7g protein)
- +
- 1 slice of whole grain bread
- = Total 17g protein**

It's important to note that individuals with kidney disease should consult a dietitian or doctor before increasing their protein intake.

Additionally, consuming an adequate amount of calories from a variety of foods is crucial for maintaining a balanced diet, rather than solely focusing on consuming excessive amounts of protein."





*The easiest way to get vitamin D is by exposure to sunlight.*

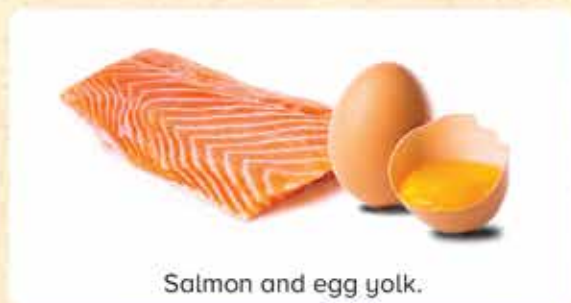
## 2 Taking adequate amount of vitamin D.

If the amount of vitamin D in the body is insufficient, it will not only affect calcium absorption, but also cause a decrease in muscle strength and lead to sarcopenia.

The easiest way to get vitamin D is by exposure to sunlight. According to research, it's best to expose oneself for 10-15 minutes between 10:00 am and 3:00 pm when the sun is strong, 3-4 times a week without applying sunscreen in order to obtain sufficient vitamin D.



Vitamin D also occurs naturally in animal foods such as salmon, egg yolk and animal liver or foods fortified with vitamin D such as milk, cereals and orange juice which will be stated on the food labeling. However, it's not easy to take sufficient amount of vitamin D from food which found only in the small amount and vitamin D supplement would be recommended especially for the elderly.



Salmon and egg yolk.

*Currently, the recommended daily vitamin D intake in Malaysia*

**For Adult** 400 I.U ( 10 microgram )

**For Elderly (> 65 years old)** 600 I.U ( 15 microgram )

Food	Serving	Vitamin D (microgram)
Milk, cow fortified	1 cup	2.5
Sardines, canned	1 oz / 1 tablespoon	2.1
Salmon	3 oz / 1 palm size	11.1
Liver, beef, cooked	3 oz / 1 palm size	0.4
Egg yolk	1 egg yolk	0.6

## 3



### EXTRA TIP - Omega 3

"Omega-3s are well known as a good fat that protects our heart. Many doesn't know that with its anti-inflammatory properties, it may also help to prevent muscle loss and improve muscle strength and function in older adults.

However, food sources that are rich in omega-3s, such as fatty fish, nuts, and seeds, are often not consumed in sufficient quantities, so supplements are usually recommended for the elderly to obtain these benefits."

## Second Key: What to exercise?

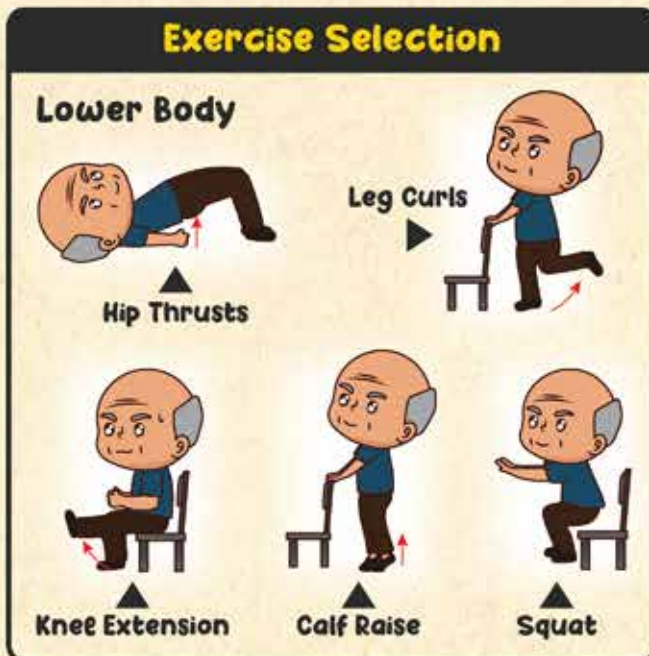
Focus on performing resistance exercises as they have been proven and recommended to increase muscle protein synthesis, increase the size of muscle fibers, and improve overall muscle strength and physical performance in older people with sarcopenia, as well as to prevent sarcopenia.

### Benefits of Resistant Exercise:

- Build muscle & strength.
- Maintain bone density.
- Improve balance, coordination, and mobility.
- Reduce your risk of falling.
- Maintain independence in performing activities of daily life.

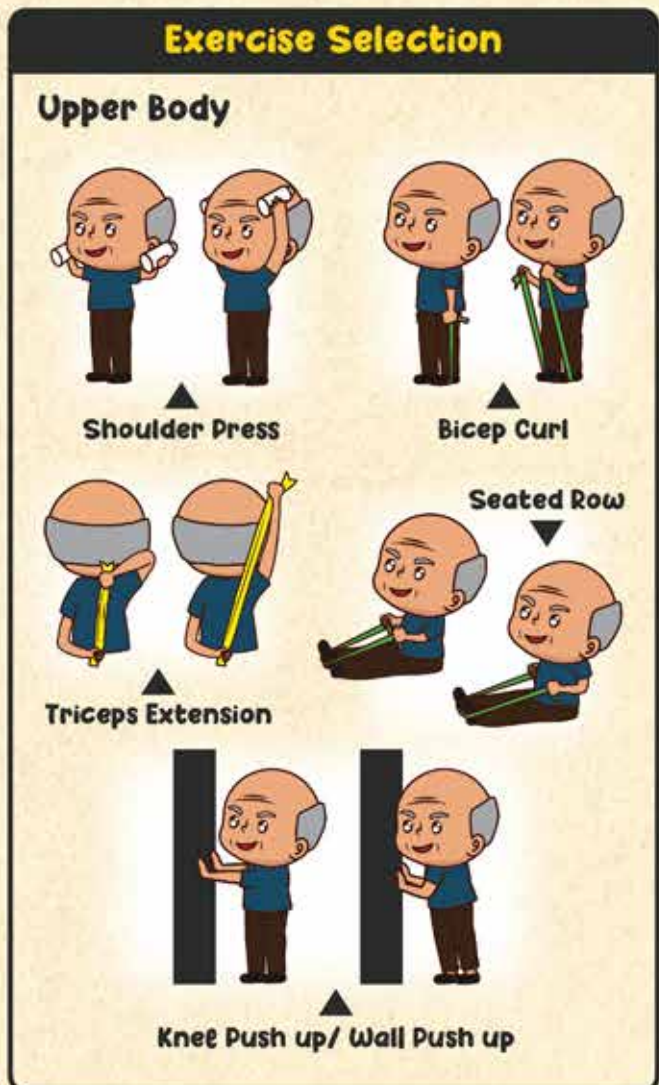
To fight sarcopenia, the elderly should focus on compound exercises (multi-joint) targeting the major muscle groups. Resistance exercise programs should consist of **two full-body exercise sessions per week**.

**Lower Body Exercises** should involve the quadriceps, hamstrings, gluteal muscles, calves, and the muscles of the ankle and foot, which help in performing activities of daily living including walking, rising from a chair, climbing stairs, and lifting items from the floor, among other things.



Written by :  
Mr. Gan Chi Tat,  
Certified Fitness Instructor

**Upper body exercises** should involve the chest, back, shoulder, arm muscles, and grip strength, which help in performing basic daily activities such as carrying items, retrieving items from a cabinet, pulling or pushing a chair, and opening cans, among other things.



All exercises are intended for general knowledge. Each individual has different body conditions; therefore, you should consult an experienced Personal Trainer or physiotherapist to develop an exercise regimen which suits you.

For best results, it is recommended that you perform 10-15 repetitions per set, and complete 1-2 sets per day, with a rest period of 2-3 minutes between each set.

Exercise tools can be used to improve training outcomes, such as resistance band and dumbbells or a 500ml water bottle can also be used as an alternative.



# Muscle Recovery Solutions!

The Key is the Combination of **Nutrition & Exercise**

## STEP 1

**Complete & Balanced Nutrition**



**Metabolic Energold**  
3-in-1 Convenient Formula

- ▶ Kobayashi Hmb Protein
- ▶ Type 2 Collagen
- ▶ Calcium & Vitamin D

## STEP 2

**Protein**

**Metabolic Oteine**  
Premium whey protein powder & versatile in any drink/meal.



## STEP 3

**Vitamin Supplement**

**Vitamin D and Omega 3**  
Improve muscle function, reduce inflammation & scientifically proven reduce falling risk.



## STEP 4

**Resistance Exercise**  
Exercise Band suitable for variety of exercise.



With different colour in different strength.



MSA Reg No: GMD56590164217A

See improvement in **Just 2 weeks!**

## Vitality Package

### Jumpstart Package

1 X Metabolic Oteine (68519)  
3 X Exercise Band (100202198)



~~RM 149.60~~  
**RM 101**

**SAVE RM 48.60**

1 X Metabolic Energold Original Flavor (70363) or Plant Based (100045772)  
1 X Metabolic Oteine (68519)  
3 X Exercise Band (100202198)



~~RM 278.50~~  
**RM 193**

**SAVE RM 85.50**

### Gold Package

1 X Metabolic Energold (70363)  
1 X Powerlife Essential Omega 3 60s (73026)  
1 X Metabolic Oteine (68519)  
3 X Exercise Band (100202198)  
**FREE Powerlife Vitamin D3 1000IU 60s (06667)**



~~RM 487.40~~  
**RM 298**

**SAVE RM 189.40**

**FREE Physio Consultation**

\*For purchase Jumpstart package, Vitality package and Gold package.

**Worth RM 50**

**Grab the Package NOW at any Alpro Pharmacy outlets!**

All these medical devices registered under Act 737





**Feeling Hard or Weak  
Getting up from sitting or  
Lying position?**

They may be signs of muscle loss  
and risk of falling down.



**Just  
Walk-In**

**FREE**

**Muscle Strength  
Assessment**

Get your result in 3 seconds!

Choose Your Date And Outlet Now.

Areas	Date
Negeri Sembilan, Melaka	15/06 - 9/08/2023
Kuala Lumpur & Selangor	24/08 - 18/10/2023
Sabah & Sarawak	24/08 - 20/09/2023
	05/10 - 01/11/2023
	16/11 - 13/12/2023
Johor	02/11 - 27/12/2023
Kelantan, Terengganu, Pahang	25/01 - 20/03/2024
Kedah, Penang, Perak	04/04 - 29/05/2024



**Stand A chance to Win**





# Join & Win



Gintell G-Feetie Multifunctional Foot Massager **x5**



**x1 Winner per Month**

UP TO RSP RM

# 11,440

**WORTH OF PRIZE TO BE WON!**

## How to Join & Win ?

### 1 Visit



Visit outlet to do the Muscle Strength Assessment

### 2 Register



Congratulations! You have successfully registered for 1 entry into the Lucky Draw!

Reward 10 Alpro points / limited x1 per Alpro member  
Spend RM 1 = 1 Alpro Points

### 3 Win

A Winner will be announced on Alpro Pharmacy Facebook Page



Scan Here To Like & Follow



1. For Silvercare Member  
2. Purchase Any "Muscle Recovery Package"

## JOIN NOW!

Negeri Sembilan & Melaka **15/06 - 9/08/2023**  
Kuala Lumpur & Selangor **24/08 - 18/10/2023**  
Sabah & Sarawak **24/08 - 20/09/2023**

\*T&C Apply

**55**  
Years Old  
And Above



BE OUR  
**Silvercare**  
Member

**How to Join?**



<p><b>STEP 1</b></p>		<p><b>STEP 2</b></p>	<p><b>STEP 3</b></p>
<p><b>FREE</b></p>	<p><b>JOIN</b></p>		<p><b>DONE</b></p>
<p>Register for free at Alpro Pharmacy.</p>	<p>Join our Facebook Group</p>	<p>or</p>	<p>Get your Silvercare Member sticker.</p>
		<p>Malay Version</p>	

\* Silvercare membership applicants must be individuals aged 55 years and above. Free registration only applicable for all Alpro members and it is a lifetime membership.



**Exclusive Silvercare Member Benefits**



<p><b>FREE RM10</b></p>	<p><b>FREE</b></p>	<p><b>FREE</b></p>
<p><b>Cash Voucher</b> For Every RM200 Spent.</p>	<p><b>3 Rebate Vouchers</b></p>	<p><b>Hearing Assessment</b> Worth RM80.</p>
<p>(For Any Items In The Store With No Star(*) Labeling in Alpro Outlet.)</p>		
<p><b>FREE 12 MONTHS</b></p>	<p><b>Monthly Discounted</b></p>	<p><b>Silvercare Family Day</b></p>
<p><b>Extended Warranty</b></p>	<p><b>Every 18th</b></p>	<p><b>Gathering</b></p>
<p><b>MGVEN   Anzen   reliable</b></p>	<p>Monthly Discounted Items.</p>	
<p>* Selected rehab product.</p>		

\*Term and conditions apply.

# SPECIAL PROMOTION

Only for Silvercare Member

1 DAY ONLY!



Available On Silvercare Day **Every 18<sup>th</sup>** Of The Month.



S SELECT DENTURE CLEANSER TABLET 108S

[100122852]

SPECIAL DEAL

RSP  
RM 63<sup>58</sup>

BUY 2 @  
**RM 52\***

MDA Reg.No : 4971902071152



WODAPHIL GENTLE HYDRO CLEANSER 250ML

[73961]

SPECIAL PRICE

OFF  
40%

~~RM 40<sup>90</sup>~~  
**RM 22<sup>50</sup>\***

Breath Care [100064849]  
Gum Care [100064856]  
Multi Care [100064864]



ORALDYNE SENSITIVITY TOOTHPASTE 100G

SPECIAL PRICE

OFF  
31%

~~RM 48<sup>90</sup>~~  
**RM 12<sup>99</sup>\***



100mg Vitamin C  
With Zinc For Adults  
(Sweetened with Natural Stevia Leaf)



EFFERMUNE ZIN-C 3X10S

[100055276]

SPECIAL PRICE

SAVE  
RM 33

~~RM 62<sup>90</sup>~~  
**RM 29<sup>90</sup>\***



POWERLIFE CITRUS BIOFLAVONOID C 60S

[67182]

SPECIAL PRICE

SAVE  
RM 50

~~RM 69<sup>90</sup>~~  
**RM 19<sup>90</sup>\***

\*Limited X2 Per Silvercare Member Every Month.



MAPLELAND LUTEIN 20MG 30S

[69123]

SPECIAL PRICE

SAVE  
RM 50

~~RM 70~~  
**RM 19<sup>90</sup>\***

\*Limited X2 Per Silvercare Member Every Month.

\*Important Notice : T&Cs Apply. Images are for illustration purposes only. Price subject to change without prior notice.

# Special

Promotion Only For Silvercare Member.

Available On Silvercare Day Every 18<sup>th</sup> Of The Month.

[100060300]  
**POWERLIFE GINKGO PLUS  
 PHOSPHATIDYL SERINE 30S**

**SPECIAL PRICE**

~~RM163<sup>90</sup>~~  
**RM88\***

**SAVE  
 RM75<sup>90</sup>**



MAL21066094NC

[70875]  
**FORA P30 PLUS SMART  
 BLOOD PRESSURE MONITORING  
 MACHINE**

**SPECIAL DEAL**

~~RM389~~  
**RM269\***

**SAVE  
 RM120**

**FREE  
 ADAPTER**



MDA Reg.No : GB54115886818

[73763]  
**OMRON HEM7156  
 BLOOD PRESSURE METER**

**SPECIAL DEAL**

~~RM113~~  
**RM10  
 REBATE\***



MDA Reg.No : GB879322041739

[72276]  
**ROSSMAX AW150  
 BLOOD PRESSURE METER**

**SPECIAL DEAL**

~~RM13~~  
**RM3  
 REBATE\***



MDA Reg.No : GB39668337717

**FARG HERBAL FOAM  
 HAIR DYE FOR GRAY HAIR 4X20ML**  
 Natural Black Color [100057041]  
 Dark Brown Color [100057033]

**SPECIAL PRICE**

~~RM69<sup>90</sup>~~  
**RM29<sup>90</sup>\***

**SAVE  
 RM40**



NOT220-400243K

[73763]  
**CERTAINTY DRY PANTS**

**SPECIAL DEAL**

~~RM4~~  
**RM2  
 REBATE\***



All these medical devices registered under Act 737

[73620]  
**PHARMATON  
 CAPSULE MULTIVITAMIN &  
 MINERALS + GINSENG 100S**

**SPECIAL DEAL**

~~RM4~~  
**RM2  
 REBATE\***

*\*Limited X1 Per Silvercare Member  
 Every Month.*



MAL19992170XCR



[71949]  
**SILVERCARE  
 GOLF UMBRELLA  
 30 INCHES**

**SAVE  
 RM40**

~~RM59<sup>90</sup>~~  
**RM19<sup>90</sup>\***



\*Important Notice : T&Cs Apply | Images are for illustration purposes only | Price subject to change without prior notice.

Join & Engage  
With Us  
**NOW!**

# Silvercare

## Facebook Groups



You can ask whatever you want to know about health.



Engage With Our  
**Professional Medical Team**

SCAN

& Join!



马来西亚家庭照护支援群



Penjagaan dan Perkhidmatan  
Kesihatan Keluarga

# Silvercare

## Family Day

Be A Part Of  
Our Family  
**NOW!**



## Silvercare Family Gatherings

are a member benefit that takes place on the 18th of every month.

We host regular casual face-to-face gatherings that members can join to meet one another, share health information, teach how to take good care of themselves, share best practices and learn from each other's experiences.

With different topics of common interest every session will build the relationships and just have some time together to maintain their independence. Register now and join us!

**JULY-SEPT 2023**

Join Our Next  
Silvercare Family Day

**GATHERING!**

2 Keys to  
**Fall Prevention** for Seniors:  
Enhancing Mobility & Stability

**2大妙招：银发族【防跌】学起来  
别等肌少才预防!**

Alpro Physiotherapist  
**EUGENE SIOW**

**SCAN &  
REGISTER  
NOW!**



**019-750 0612**

**OR CALL US TO REGISTER**

**“肌”不可失! 赶快报名参加!**



Largest in Malaysia

# WHEEL-CHAIR Repair Service

**ROUTINE SERVICE**  
Once Every 6 Months



FOOTPLATE

BRAKE

TYRE

ALIGNMENT & BALANCING

ARMPLATE

SEAT

CLEANING

Wheelchair Alignment

Let's make your wheelchair safe & comfortable to use again!



**BOOK NOW!**  
019-750 0612



Full Range Of Spare Parts & Accessories



Kill 99.9% Of Viruses & Bacteria



Door-to-door Service  
\*Depend on areas

Service Charge As Low As

**RM10**

\*Excluded changing new spare parts



Services Done Within 15min

\*Depend on areas

15 min, unless high crowd in outlet then need to put down first and get back later.



\*Important Notice : T&Cs Apply. | Images are for illustration purposes only. | For Allianz Insurance customer enjoy silvercare member service charge. |



“ Dah lama atau rosak?  
**Trade in jer,**  
 Dapat yang baru! ”



UP TO  
**RM 150**  
**REBATE**



\*While stocks last.

**MCOVEN**

**Get Your Trade-in Program In 3 Steps**

**1**

**Text or Call Us**  
 To quote the trade-in value of your old wheelchair.

**019 - 984 2923**

Or Directly Bring Your wheelchair to Any Alpro Pharmacy Outlets.

**2**

Choose one of the wheelchairs



Moven Flexi Plus Wheelchair



Moven Q05 16" / 20" Lightweight Wheelchair



Moven 12" Transport Wheelchair

**3**



Made payment & collect your **NEW WHEELCHAIR!!!**

\*Important Notice : T&Cs Apply. | Images are for illustration purposes only. | Price subject to change without prior notice. | Installation Available For CIMB & Maybank Credit Card Holder Only.



# TOP UP

# RM 1000

## FOR 1 YEAR Standard Wheelchair WARRANTY

### WHAT WE COVERED?

1



Manufacturing Defects  
On The Frame.

2



Breakage or Splitting of  
Solid Tyre.  
(Exclude Normal Wear & Tear)

\*Only solid tyre will be used to repair standard wheelchair.



“ If condition allowed, we  
**Do Not Recommend  
STANDARD  
WHEELCHAIR**  
Because..... ”



Added  
**RM100+**



**ELCO** (100126044)  
**PLUS (FABRIC) FMW043**



**16-21KG**  
Hard to Carry



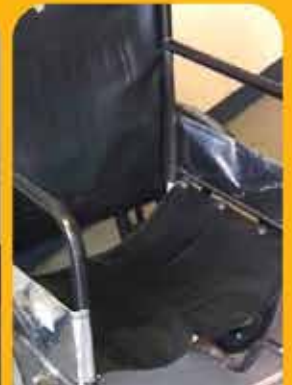
Fast  
**WEAR  
& TEAR**  
Solid Tyres



**EASY  
RUST**  
Material



Risk of  
**SHOULDER  
INJURY**



Cushion  
**UNBREATHABLE  
& EASILY RUN OUT**  
of Shape After  
Long Use.



**40 YEARS  
EXPERIENCED**

**L7**  
18-INCHES ALUMINIUM  
RECLINING & TILT-IN-SPACE  
WHEELCHAIR  
100186444

Registered under Act 737 with Medical Device Authority Malaysia  
Registration number : GA8566923-124451

RECLINING WHEELCHAIR

PRESCRIPTION WHEELCHAIR

TRANSPORT WHEELCHAIR

COMMUNE WHEELCHAIR



**K9**  
18-INCHES STEEL  
RECLINING  
WHEELCHAIR  
100186378

Registered under Act 737 with  
Medical Device Authority Malaysia  
Registration number : GA8509923-125141



**L2**  
18-INCHES  
LIGHTWEIGHT  
WHEELCHAIR  
100186360

Registered under Act 737 with  
Medical Device Authority Malaysia  
Registration number : GA8358723-123921



**K7-812A**  
18-INCHES  
TRANSIT  
WHEELCHAIR  
100186535

Registered under Act 737 with  
Medical Device Authority Malaysia  
Registration number : GA8866823-124449



**SL-155-B-606**  
18-INCHES ALUMINIUM  
COMMUNE  
WHEELCHAIR  
100186394

Registered under Act 737 with  
Medical Device Authority Malaysia  
Registration number : GA854923-125477



Recommended By  
The Malaysian Society  
Of Rehabilitation

PRICE DISPLAY IS  
**ALPRO MEMBER PRICE**

# POST-DISCHARGE CARE BEST SELLING WHEELCHAIR



## STANDARD WHEELCHAIR

**BMATE-CA902**

**Standard PVC**

- Fixed Backrest/Armrest/ Footrest
- Weight 16kg



[7521]

~~RM 350~~  
**RM 279**

MDA Reg.No : GA2911519-32159

**HOSPITECH-SFN-SWC-STD-101**  
**Standard Wheelchair 16kg**

- Fixed Backrest/Armrest/ Footrest
- Weight 16kg

[67281]

**RM 279**

MDA Reg.No : GA7791220-41048



**soma 105**

**Standard Aluminum**

**Wheelchair**

- Standard Lightweight
- Stylish & Durable

[100041870]

~~RM 749~~ **RM 711**

MDA Reg.No : GA5627119-34201



**ELCO PLUS-FMW043**

**Standard FABRIC**

- Fixed Backrest/Armrest
- Weight 12.5kg
- Detachable Footrest

[100126044]

**RM 380**

MDA Reg.No : GA3292220-45340



**KAWAMURA**

**Standard Basic**

- Standard Lightweight
- Aerospace-Grade Alum Alloy Frame

[100044981]

**RM 1,535**

MDA Reg.No : GA874420-42791



## LIGHTWEIGHT & COMPACT

**MOVEN Q05 20INCH**

**Lightweight**

- Light Weight Aluminium Alloy Frame
- 20" Rear Wheel
- Flip-up Armrest
- Flip-up Legrest



[63985]

~~RM 899~~  
**RM 770**

MDA Reg.No : GMD616448918A

\*Buy Back Available  
Within 18 Months

**HOPKIN WS-HRW-CSJ**

**Compact Steel Wheelchair**

- Steel Frame
- Fixed Armrest & Footrest
- Flip Down Backrest

[100151562]

**RM 419**

MDA Reg.No : GA4849722-91090



**MOVEN Supreme Deluxe Wheelchair**

- Extra Comfort For 165cm & Above
- Breathable Cushion & Upholstery
- Foldable Backrest

[71792]

~~RM 1,399~~ **RM 988**

MDA Reg.No : GA87920-38659



**BMATE BA1769LFH-A**

**Light Aluminum Wheelchair 20"**

- Light Weight Aluminium Frame
- Fixed Arm Rest
- Flip-up Legrest

[69834]

~~RM 639~~ **RM 529**

MDA Reg.No : GA7200920-40816



**karma ERGOLITE 2**

**Lightweight Wheelchair**

- Pressure Relief Seating System
- Detachable Legrest

[100105014]

~~RM 2,122~~ **RM 2,015**

MDA Reg.No : GA6765919-33289



**MOVEN**

**Active Sport Wheelchair**

- Tension Adjustable Backrest
- Quick Release Rear Wheel
- Lightweight & Compact

[71680]

~~RM 5,270~~ **RM 2,999**

MDA Reg.No : GA6598720-38644



**KAWAMURA**

**Rollator Wheelchair**

- 3 In 1 Functions
- Rollator Mode
- Max user weight : 100kg

Japan Brand

[100045004]

~~RM 2,499~~ **RM 2,150**

MDA Reg.No : GA8714420-42791



Take Note : **12 24 60** 12/24/60 Months Warranty on frame manufacturing defect. **6** 6 Months Installment Available.

Only for **MOVEN** WHEELCHAIR

**7 Days**

Exchange Return  
Guarantee

**Up to RM300**

Buy Back Value  
\*Selected Model

**12 Months**

Warranty  
\*Frame Only

Extended

**12**  
MONTHS  
WARRANTY



Exclusive to  
**SILVERCARE**  
MEMBERS

All these medical devices registered under Act 737

\*Important Notice : T&Cs Apply. | Images are for illustration purposes only. | Price subject to change without prior notice | Price display is Alpro Member Price.

! Installment Available For CIMB & Maybank Credit Card Holder Only. |

## TRAVEL & TRANSPORT WHEELCHAIR

### MCVEN BM6689LFH Travel Wheelchair

- Aluminium Frame
- 8" Castor Wheel
- Breathable & Comfortable Seat Cushion



[74529] ~~RM 650~~ **RM 570**

MDA Reg.No : GA6545721-52265

### MCVEN BM01LABJ-12 INCH Transport Wheelchair

- 12" Transport Wheelchair
- Swing Footrest
- Detachable Footrest
- Foldable Backrest

[100079383] ~~RM 699~~ **RM 699**

MDA Reg.No : GA9618422-91832



Ease For Travel

### soma 215 Lightweight Aluminum Wheelchair

- Compact & Ultralight
- Swing-away Footrest

[100041904] ~~RM 839~~ **RM 797**

MDA Reg.No : GA562719-34201



### KAWAMURA Portable Wheelchair

- Compact & Ultralight
- Aerospace-Grade Alum Alloy Frame

[100045012] ~~RM 1,950~~ **RM 1,950**

MDA Reg.No : GA8714420-42791



### MCVEN Q05 16INCH Lightweight Wheelchair

- Light Weight Aluminium Alloy Frame
- 16" Rear Wheel
- Flip-up Armrest
- Flip-up Legrest

[63984] ~~RM 899~~ **RM 770**

MDA Reg.No : GMD79630799918A



### karma ERGOLITE KM2501 Travel Wheelchair

- Compact & Ultralight
- Pressure Relief Seating System

[100041961] ~~RM 1,789~~ **RM 1,699**

MDA Reg.No : GA6765919-33289



### COMFORT K7-812A 18-INCHES Transit Wheelchair

- Detachable Legrest
- Flip-up Armrest
- Compact & Heavy Duty

[100186535] ~~RM 2,700~~ **RM 2,250**

MDA Reg.No : GA8866823-12449



## EASY TRANSFER (DAF) WHEELCHAIR

### MCVEN BM3979LFH Flexi Plus

- Hexagonal Pattern Seat & Backrest
- Seamless Elliptical Frame
- Swing-away & Detachable Footrest



[74528] ~~RM 1,150~~ **RM 799**

MDA Reg.No : GA8355920-50618

### soma AGILE DAF Wheelchair

- Flip-back Armrest
- Detachable Legrest
- Easy Transfer
- Self-Propelled

[100041938] ~~RM 1,299~~ **RM 1,234**

MDA Reg.No : GA4132622-89655



### KAWAMURA Comfort DAF

- Tension Adjustable Backrest
- Comfortable With Extra Cushion
- Detachable Armrest & Footrest

[100045038] ~~RM 2,345~~ **RM 2,345**

MDA Reg.No : GA8714420-42791



### COMFORT L2 18-INCHES Lightweight Wheelchair

- Adjustable Seat Height
- Adjustable Armrest Height
- Quick-release Rear Wheel

[100186360] ~~RM 3,250~~ **RM 2,690**

MDA Reg.No : GA8358723-123921



### karma S-ERGO 125 DAF Wheelchair

- Pressure Relief Seating System
- Flip-Back Armrest
- Detachable Legrest

[100042050] ~~RM 2,000~~ **RM 1,900**

MDA Reg.No : GA6765919-33289



### COMFORT K7 18-INCHES Aluminium Wheelchair

- Easy Transfer
- Flip-back Armrest
- Detachable Legrest
- Max Capacity 140kg

[100186527] ~~RM 2,772~~ **RM 2,310**

MDA Reg.No : GA8358723-123921



### KAWAMURA DAF Wheelchair

- Adjustable Seat Height
- Tension Adjustable Backrest
- Detachable Armrest & Footrest

[100041870] ~~RM 3,304~~ **RM 3,304**

MDA Reg.No : GA8714420-42791



Use Together

Cushion For Your

Comfort

### BESTMADE Coccyx Memory Foam Seat Cushion

- Pressure Relief
- Cooling Gel Pad
- Washable Outer Layer



[100057173] ~~RM 199~~ **RM 168**

**PWP**  
**RM 118**

With Any Wheelchair Purchase

### MOSAIC® 18" Cushion with Cover

- Shape Adjustable
- Easy To Adjust
- Cell Height 7cm



[50440] **RM 480**

MDA Reg.No : GMD41951983319A

### ROHO® QUADTRO SELECT® HIGH PROFILE® 18" Cushion

- Made Of Soft, Flexible Aircells
- Quick And Easy Adjustments
- 4" Cell Height



[70999] **RM 1,999**

MDA Reg.No : GMD33837925218A

Take Note : **12 24 60** 12/24/60 Months Warranty on frame manufacturing defect. **6** 6 Months Installment Available.

All these medical devices registered under Act 737

\*Important Notice : T&Cs Apply. | Images are for illustration purposes only. | Price subject to change without prior notice | Price display is Alpro Member Price.

| Installment Available For CIMB & Maybank Credit Card Holder Only. |

# BEST SELLING WHEELCHAIR

## RECLINING & POSITIONING WHEELCHAIR

- BMATE BB309GCJ**  
Steel Reclining Wheelchair
- Tilt-In-Space
  - Foldable & Compact



[100196052]  
~~RM 950~~  
**RM 770**

MDA Reg.No : GA5714522-98423

- karma KM5000**  
Reclining Wheelchair
- Reclining Back Support
  - Elevating Legrest



[54433]  
~~RM 3,099~~  
**RM 2,944**

MDA Reg.No : GA6765919-33289

- karma VIP2**  
Positioning Wheelchair
- 2 in 1 (Tilt & Recline)
  - Tension Adjustable Backrest



[100042134]  
~~RM 5,599~~  
**RM 5,319**

MDA Reg.No : GA6765919-33289

**COMFORT** K9

- Reclining Wheelchair
- Detachable & Flip Back Swing Armrest
  - Detachable Swing Way Elevating Footrest
  - Max Capacity 140 Kg



[100186378] 18-INCHES **RM 2,490**  
[100186386] 20-INCHES **RM 2,668**

MDA Reg.No : GA8509923-125141



**KAWAMURA** FULL  
Reclining Wheelchair

- Reclining Back Support
- Soft & Comfortable
- Adjustable Armrest



[100045020]  
**RM 3,840**

MDA Reg.No : GA8714420-42791

**COMFORT** L7 18-INCHES  
Aluminium Tilt-in-space  
Wheelchair

- Easily Tilt And Recline
- Comfort Air Mesh Upholstery



[10088444]  
~~RM 8,034~~  
**RM 6,695**

MDA Reg.No : GA8566923-124451

## XL & HEAVY DUTY WHEELCHAIR SPECIAL CONDITION

**MCVEN** BM659XQ  
Heavyduty Wheelchair

- Flip Up Armrest
- Detachable Footrest



[74527]  
~~RM 1,100~~  
**RM 850**

MDA Reg.No : GA1462521-55663

**FELCO** FMW-21 CHROMED 24 INCH  
Extra Bariatric Wheelchair

- Flip Up Armrest
- Detachable Footrest



[74066]  
**RM 899**

MDA Reg.No : GA35873477817

## ELECTRIC WHEELCHAIR

**MCVENGO**  
Electric Wheelchair

- Aluminum Alloy Frame
- Simple Operation
- Interchange Manual & Electric Mode



[68088]  
~~RM 8,395~~  
**RM 5,099**

MDA Reg.No : GMD79630799918A

**PROLIFE** SC-A500  
Sowell Electric  
Wheelchair Black 15kg

- Flip-up Armrest & Footrest
- Easy Foldable
- Travel up to 15km



[100174713]  
~~RM 3,390~~  
**RM 3,290**

MDA Reg.No : GA3664723-126865

**BES+MADE Advanx**  
Sliding Transfer Board

- 2 Sided Anti-slip Pads
- High Density Polyethylene

[80925]  
~~RM 342.90~~  
**RM 319**

**PWP**  
**RM 225**  
With Any Wheelchair Purchase

MDA Reg.No : GA3854021-63644

## COMMODOE WHEELCHAIR

**HOPKIN**  
Commode Wheelchair

- Chrome Steel Frame
- Fixed Backrest/Armrest/ Footrest
- Comes with Detachable Plastic Seat Tray and Pot



[100956264]  
**RM 599**

MDA Reg.No : GA4849722-91090

**MCVEN** 606LABJ  
Commode Wheelchair

- Caring & Comfortable Design
- Foldable Backrest
- Foldable Footrest



[67045]  
**RM 729**

MDA Reg.No : GMD3905823418A

**COMFORT** SL-155-B-606  
Aluminium Commode  
Wheelchair

- Pu Seat With Front Opening
- Easy Transfer
- Max Capacity 140 Kg



[100186394] 18-INCHES **RM 2,450**  
[100186402] 20-INCHES **RM 2,548**

MDA Reg.No : GA8154923-125477

**COMFORT** SL-155B-60624  
Aluminium Commode  
Wheelchair

- Pu Seat With Front Opening
- Quick-release Rear Wheel
- Easy Transfer
- Max Capacity 140 Kg



[100186410] 18-INCHES **RM 3,280**  
[100186426] 20-INCHES **RM 3,315**

MDA Reg.No : GA8154923-125477

**Take Note :** 12 24 60 12/24/60 Months Warranty on frame manufacturing defect. 6 6 Months Installment Available.

All these medical devices registered under Act 737

\*Important Notice : T&Cs Apply. | Images are for illustration purposes only. | Price subject to change without prior notice | Price display is Alpro Member Price

| Installment Available For CIMB & Maybank Credit Card Holder Only. |



**FREE**  
For Silvercare  
Member

# Glucometer & Blood Pressure Meter Check!

Recommended To Do Once Every 6 Months.



1

**Visit**

Bring in your meter to any selected alpro outlets.

2

**Check**

Perform accuracy check.

3

**Collect**

Collect back your meter!



“ Worry your result not accurate on the meter?

**019-750 0612**

Call us for appointment now!

”



All these medical devices registered under Act 737

\*Important Notice : T&Cs Apply. | Images are for illustration purposes only. | Availability based on pre-arranged schedule, kindly text/call to confirm.



Recommended By  
The Malaysian Society  
Of Rehabilitation

PRICE DISPLAY IS  
**ALPRO MEMBER PRICE**

# POST-DISCHARGE CARE SAFE MOVE MOBILITY AIDS



## One-handed Grab Support



**HOPKIN**  
Walking Stick - T-shape  
(Black)  
(100049949)  
**RM 28**  
MDA Reg No : GA7914922-95180



**ANZEN BA338I3**  
Adjustable Walking Stick  
(70665)  
~~RM 59~~ **RM 42**  
MDA Reg No : GA4965520-38265



**ANZEN BA538L1**  
Foldable Walking Stick  
(70666)  
~~RM 69~~ **RM 45**  
MDA Reg No : GA7978920-38261



**HOPKIN**  
Foldable Walking Stick  
(100156363)  
**RM 30<sup>90</sup>**  
MDA Reg No : GA7914922 - 95180



**ANZEN BA1148**  
Quad Cane  
Narrow / Broad Base  
(71678 / 70664)  
~~RM 89~~ **RM 63-69**  
MDA Reg No : GA8656520-38275



**BMATE BB1148**  
Aluminum Quad Cane  
Narrow / Wide Base  
(74533 / 74534)  
**RM 53**  
MDA Reg No : GA8502921-53777

Take Note : **12** 12 Months Warranty.

## Two-handed Grab Support



**BMATE BB118L**  
Aluminum  
Reciprocating Walker  
(74535)  
**RM 109**  
MDA Reg.No : GA8911320-52637



**ANZEN BA118L**  
2 in 1 Walking  
Frame  
(70660)  
~~RM 189~~ **RM 136**  
MDA Reg.No : GA7163120-38298



**ANZEN BA118LG-5**  
2 Wheeled Walker  
(70661)  
~~RM 219~~ **RM 156**  
MDA Reg.No : GA4251520-38253



**HOPKIN**  
Rising Walking Frame  
(100049915)  
**RM 129**  
MDA Reg.No : GA2120722-100701

## Walk And Rest



**ANZEN BA638**  
Tripod Cane Seat  
(70667)  
~~RM 89~~ **RM 70**  
MDA Reg.No : GA4489320-38291

For Travel / Prayer / Picnic



**GREENCITY C911**  
Chair Cane /  
Praying Chair  
(54995)  
**RM 82<sup>90</sup>**

## Injury Support



**ANZEN**  
BA108LM / BA108LL  
Shoulder Crutches  
Adult / Giant  
(70669 / 70703)  
~~RM 129~~ **RM 82**  
MDA Reg No : GA4267920-38283



**BMATE BB108LM**  
Alluminum Shoulder  
Crutches 1 Pair  
(74536)  
**RM 65**  
MDA Reg No : GA864921-52661



**ANZEN BA158L2**  
Elbow Crutches 1's  
(70663)  
~~RM 64<sup>50</sup>~~ **RM 41<sup>50</sup>**  
MDA Reg No : GA4468220-38250



**HOPKIN**  
Elbow Crutch Alum  
(100049923)  
**RM 32**  
MDA Reg No : GA7914922-95180

## SPECIAL !



**ANZEN**  
Folding Hiking Pole  
90cm-110cm (100005701)  
110cm-135cm (100005719)  
~~RM 105~~ **RM 79**



**PROLIFE**  
Aluminum 2 In 1  
Rollator  
(100066927)  
~~RM 520~~ **RM 480**  
MDA Reg No : GA9138622-103794

## 2 Correct Methods To Use The Walking Aid



**1** Position Of Grip Handle

Adjust the height correctly.

**2** Put it at the side with stronger non-injured leg.

Stronger Leg | Weaker Leg

**FREE**

**Service Charge**  
On The Repair of Anzen  
Walking Aids

**7 Days**  
Exchange Return  
Guarantee

**Exchanges**  
1 Session Of Rubber Tip  
Within 12 Months

Extended

**12**  
MONTHS  
WARRANTY

Exclusive to  
**SILVERCARE**  
MEMBERS

All these medical devices registered under Act 737

\*Important Notice : T&Cs Apply. | Images are for illustration purposes only. | Price subject to change without prior notice. | Price display is Alpro Member Price. |





# The right choice for **BATHROOM MOBILITY**

**showerbuddy®**

**SB3T\*\***

*1Roll-In Buddy Tilt*  
100191147

Registered under Act 737 with Medical Device Authority Malaysia  
Registration number : GA5533523-125545



**Up to 250kg**

High Weight  
Capacity



**Grade 304**

Stainless Steel  
Parts & Hardware



**No Rust**

Premium Aluminium  
Frame (6061 T6)



**\*\*Lifetime  
Warranty**

On Frame



**SB6W\*\***

*Roll-In Buddy Solo*  
100191196

Registered under Act 737 with Medical Device Authority Malaysia  
Registration number : GA5533523-125545



**SB6C\*\***

*Roll-In Buddy Lite*  
100191188

Registered under Act 737 with Medical Device Authority Malaysia  
Registration number : GA5533523-125545



**SB7E** (2 Years Warranty)

*Eco Traveller*  
100191238

Registered under Act 737 with Medical Device Authority Malaysia  
Registration number : GA6465523-116866



# Premium Home Nursing Embrace Comfort at Home

Homecare Bed Essential

Multiple Functions | Portable | Lightweight



RM **4,300.00**  
/UNIT

100202142  
Registered under Act 737 with Medical Device Authority Malaysia  
Registration number : GA8473223-132542



Recommended By  
The Malaysian Society  
Of Rehabilitation

PRICE DISPLAY IS  
**ALPRO** MEMBER  
PRICE

# POST-DISCHARGE CARE SAFE SLEEP HOSPITAL BED



## HOSPITAL BED

### BESTMADE Electric Homecare Shift Bed

| Wheelchair & Nursing Bed Combo |  
| One-button electric switch from  
lying position to sitting position |

(100060466)

**12**

RM ~~19,800~~ RM **12,000**



PRE-ORDER

### COMFORT Electric Homecare Bed

| Luxurious Design |  
| Adjustable Sleeping  
Position |  
| Germany Motor System |

(100044973)

**12**

**12**

RM ~~5,000~~ RM **4,750**

\*Mattress Included.



PRE-ORDER

### ULTRA LOW HEIGHT Fall Prevention

#### MOVEN

### \*3 Function Luxurious Ultra-low ELECTRIC Hospital Bed BM503D-32

| Adjustable position for head and feet |  
| Collapsible siderail | 3" mattress |

(73585) + (70137)

**12**

**12**

RM ~~5,130~~ RM **4,500**

Mattress  
Included



\*7 DAYS  
Return Policy



MDA Reg.No : GA9566520-49347

### BMATE B-S231LN

### Two Crank Manual Hospital Care Bed

| Adjustable position for head and feet |  
| Collapsible siderail |  
| Non-height adjustable | 3" mattress |

(100073147) + (70137)

**12**

RM **1,900**

Mattress  
Included

\*7 DAYS  
Return Policy



MDA Reg.No : GA949922-86677

#### MOVEN

### \*3 Functions Manual Bed B-S331LN

| Adjustable bed height |  
| Adjustable position for head and feet |  
| Collapsible siderail | 3" mattress |

(66801) + (70137)

**12**

RM ~~3,600~~ RM **2,950**

Mattress  
Included

\*7 DAYS  
Return Policy



MDA Reg.No : GMD57430969219A

### NEOLEE

### \*Electric Hospital Bed NL302D

| Adjustable position for head and feet |  
| Motor-controller | Collapsible siderail |  
| Adjustable bed height | 3" mattress |

(107164)

**12**

RM **3,600**

Emergency  
Manual Crank  
For Power  
Outage.

Mattress  
Included



MDA Reg.No : GMD98298522198A

Take Note : **12** 12 Months Installment Available. **12** 12 Months Warranty for Motor.

All these medical devices registered under Act 737

\*Important Notice : T&Cs Apply. | Images are for illustration purposes only. | Price subject to change without prior notice | Price display is Alpro Member Price. |  
| Installment Available For CIMB & Maybank Credit Card Holder Only. | Please consult your doctor for the interpretation of results and diagnosis. |

## RIPPLE MATTRESS

**APEX**  
Care for a Healthy Life

**12 MONTHS WARRANTY**

**APEX DOMUS 1, Bubble**  
| 2.5" height bubble cells |  
| Medical Grade PVC |  
| Suitable for low risk pressure injury |

(52553)

~~RM 450~~ **RM 350**

MDA Reg.No : GMD25608743518A



**APEX DOMUS 2, Tubular**  
| Pillow Function | Nylon/PU Cover |  
| CPR quick release tab |  
| Ventilated low-air-loss |  
| Weight indicator reference |

(53166)

~~RM 1,299~~ **RM 950**

MDA Reg.No : GMD25608743518A

Biocompatibility Water Resistance Flame Retardant Vapour Permeable



**APEX DOMUS 3, Tubular**  
| Suitable for high risk pressure injury |  
| 5" height mattress |  
| Superior medical grade |  
| Dual therapy modes |

(80202)

~~RM 4,200~~ **RM 3,650**

MDA Reg.No : GA6298720-42801



**APEX DOMUS AUTO, Tubular**  
| Suitable for medium to high risk patient |  
| Automatic pressure relief system |  
| Multiple therapy modes for better patient care |

(100m55)

~~RM 8,500~~ **RM 7,500**



All items is registered under Act 737

Take Note : **6** 6 Months Installment Available.

**12** 12 Months Installment Available.

All these medical devices registered under Act 737

\*Important Notice : T&Cs Apply. | Images are for illustration purposes only. | Price subject to change without prior notice | Price display is Alpro Member Price. |  
| Installment Available For CIMB & Maybank Credit Card Holder Only.

**Domus 1 Suitable for**

Stage 1 for prevention.



**STAGE 1**

- Skin intact
- Non-blanchable erythema.

**Domus 2 & Domus 3 Suitable for**

Prevention and ALL stages of Pressure Ulcer.



**STAGE 1**

- Skin intact
- Non-blanchable erythema.



**STAGE 2**

- Partial loss of dermis
- Shallow open ulcers.



**STAGE 3**

- Full thickness skin loss.
- Fat exposed.



**STAGE 4**

- Full thickness skin loss.
- Exposed bone, muscle or tendon.



**UNSTAGEABLE**

- Covered with slough or eschar.
- Depth undetermined.



**SUSPECTED DEEP TISSUE INJURY**

- Purplish skin discoloration.
- Potential for deeper tissue damage.

### EXTRA TIPS

**1. Must use TED Stocking**

To improve blood circulation & reduce chance of blood clot at the leg due to immobility.

**2. Body repositioning every 2 hours.**

**UGOKU UA-010 Anti-Embolism Stocking**

Size:  
XS (70835) L (71312)  
S (71310) XL (71313)  
M (71311) XXL (71314)



~~RM 79~~ **RM 59**

MDA Reg.No : GA6357820-40765



## MATTRESS

**MOVEN Hospital Bed FOLDABLE PU MATTRESSS**  
3 FOLDS

| Use for hospital bed |  
| Nursing bed |  
| Good ventilation make comfortable |

(70137)  
3 INCHES  
**RM 300**

(61969)  
4 INCHES  
**RM 400**



**HAPPI HI-DENSITY Support Mattress**  
| 4" thickness mattress |  
| 100% first hand material |

(72467)

**6**  
~~RM 650~~  
**RM 550**



**PWP**  
**RM 480**

With Rental/Purchase Hospital Bed



Recommended By  
The Malaysian Society  
Of Rehabilitation

PRICE DISPLAY IS

**ALPRO** MEMBER PRICE

# POST-DISCHARGE CARE BEDRIDDEN RELATED SUPPORT

## FAMICA Safety Bedrail

- | Easy Installation |
- | Easy Access |
- | Height Adjustable

[100044965]



RM 399

## PROLIFE MO-BR03 Bed Assist Bar

- | Height adjustable legs & grip bar |
- | Helps users get in and out of bed |

[73575]



RM 250

## PROLIFE Electric Patient Hoist (LW06201)

- | Electric operated |
- | Easy to transfer |
- | Patient Lifter |

[100178190]



~~RM 4,750~~  
RM 4,500

MDA Reg.No : GA6655922-103086

## HOPKIN Over bed table

- | High adjustable |
- | Multi-purpose table |
- | Steel frame with H leg |
- | Laminated top |

[71679]



RM 279

## HOPKIN IV Drip Stand With Wheels

- | Strong powder-coated steel frame with a solid base |
- | Removable hooks |
- | Versatile hooks |
- | Quick-release push-pin |

[100156025]



RM 159

MDA Reg.No : GA10807522-101085

## HOPKIN Adj Bed Backrest

- | Sturdy metal frame |
- | Five easily adjusted angles |
- | Folds easy to store and transport |

[100091937]



RM 130

## HOPKIN Ward Screen 4 Fold With Blue Curtain

- | Blue curtain & spring curtain hanger |
- | Easy to clean |
- | Four panel |

[100091929]



RM 449

## COVIDIEN SHILEY Tube Tracheostomy Tube Cuffless With Inner Cannula

- | For pulmonary hygiene |
- | directs breathing through upper airway |

[62356]



RM 240<sup>60</sup>

## SILICONE Stomach Tube For Single Use Ryles Tube

Sizes:

- 8FR [65870]
- 10FR [61321]
- 12FR [56315]
- 14FR [65871]
- 16FR [66235]
- 18FR [67147]



RM 38

## Ryles Tube Nasogastric Tube

Sizes:

- 8FG [33354]
- 10FG [42858]
- 12FG [33358]
- 14FG [33355]
- 16FG [33356]
- 18FG [33357]



RM 350

## Two-way Foley Catheter

- | Collects urine |
- | Urinary incontinence |
- | Partially flexible tube |

Sizes:

- 12FR [43600]
- 14FR [43691]
- 16FR [43692]
- 18FR [43693]
- 20FR [58576]



RM 4

## Male External Catheter Condom Catheter x 1's

- | Natural rubber latex |
- | Flexible sheath |
- | Urinary incontinence |

Sizes:

- S - 25mm (w) [66028]
- M - 30mm (w) [66029]
- L - 35mm (w) [66030]



RM 2

## Urine Bag 2L

- | Collection & temporary storage of urine |
- | To urinary incontinence user |

[51964]

T-Valve



RM 2<sup>60</sup>

## Plastic Urinal Male / Female

- | Pass urine on bed without spillage |

[33143]



RM 12<sup>90</sup>

MDA Reg.No : GMD14908558718A

## MOBILIS CPL-BP-C Bedpan With Cover

- | Movement on the bed without spillage |
- | Patients difficulty to move lower body |

[70939]



RM 25<sup>50</sup>

MDA Reg.No : GMD14908558718A

## MOBILIS MO611B Basic Bed Pan

- | Movement on the bed without spillage |
- | Patients still can move lower body |

[74587]



RM 21<sup>40</sup>

MDA Reg.No : GMD14908558718A

Take Note : **12** Months Warranty On Manufacturing Defect

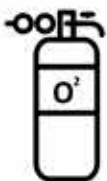
All these medical devices registered under Act 737

\*Important Notice : T&Cs Apply. | Images are for illustration purposes only. | Price subject to change without prior notice | Price display is Alpro Member Price. | Installation Available For CIMB & Maybank Credit Card Holder Only.



# POST-DISCHARGE CARE BREATHE EASY ONLY IN ALPRO

PRICE DISPLAY IS  
**ALPRO MEMBER PRICE**



**Oxygen Supply  
Sales &  
Rental Service**

**YUWELL  
Oxygen Concentrator  
(8F-5AW)**  
Supply oxygen  
continuously.  
(80590)

**12**  
~~RM 4,500~~  
**RM 3,500**  
MDA Reg.No : GB5929419-34859

**ANGELBISS  
Oxygen Concentrator  
WITH NEB (5L/MIN)**  
Supply oxygen  
continuously.  
(86929)

**12**  
~~RM 4,500~~  
**RM 3,500**  
MDA Reg.No : GB6802321-60838

**YUWELL  
Oxygen Concentrator  
7F-10 (10L/MIN)**  
Supply oxygen  
continuously.  
(73573)

**12**  
~~RM 7,400~~  
**RM 6,740**  
MDA Reg.No : GB5929419-34859

**HUMIOXY Portable  
Oxygen Concentrator  
(5L/MIN)**  
Indoor & outdoor supply  
oxygen continuously.  
(71348)

**12**  
**OUTDOOR**  
**RM 10,800**  
MDA Reg.No : GB8793420-38468

**SEAMLESS STEEL  
Cylinder  
Oxygen Tank  
SET 10L**  
Exist in difference sizes  
for emergency oxygen  
supply.  
(61578)

**6**  
**Emergency Use**  
**RM 980**

**BERRY  
Pulse Oximeter  
BM1000C**  
Detect oxygen level  
and heart rate.  
(64450)

**36**  
**Oxygen Therapy  
Must Use**  
**RM 99**  
MDA Reg.No :  
GC1470622-89555

**LYCO  
Pulse Oximeter  
PG1050C**  
Highly accuracy with  
upgraded Cypress CPU.  
(100056399)

**60**  
**Oxygen Therapy  
Must Use**  
~~RM 169~~ **RM 129**  
MDA Reg.No :  
GC3264520-47073

## Accessories

**Humidifier Bottle**  
To moisten the air  
coming out from  
oxygen tank/oxygen  
concentrator.



**Oxygen Tank  
Regulator**  
To regulate delivery  
of oxygen from  
oxygen tank.



MDA Reg.No : GC4490623-12210

**Nasal Cannula**  
To ease the delivery  
of oxygen into lungs  
via nose.



**Suction Catheter**  
Use together with  
suction pump to  
remove thick mucus.



**Oxygen Mask**  
To ease the delivery  
of oxygen into lungs  
via nose and mouth.



**Breathing  
Care**

**YUWELL  
Suction Pump  
7E-C**  
Helps to remove excessive  
mucus in airway.  
(54836)

~~RM 600~~  
**RM 518<sup>90</sup>**  
MDA Reg.No : GB10439221-54335

**ANGELBISS  
Suction Pump**  
Helps to remove excessive  
mucus in airway.  
(86985)

**RM 500**  
MDA Reg.No : GB78071343619



**Nebulizer**

**ROSSMAX Compact  
Nebulizer NB60**  
Turning liquid medicine  
into fine mist for  
patients to inhale.  
(100M4385)

**RM 295**  
MDA Reg.No : GB52961338117

**APEX  
Miniplus Nebulizer**  
Lightweight & convenient.  
Turning liquid medicine  
into fine mist for patients  
to inhale.  
(64751)

**RM 268**  
MDA Reg.No : GB10452320-46318

**APEX MobiMesh  
Nebulizer**  
Palm Size nebulizer for  
outdoor use. Suitable for  
frequent traveller.  
(55699)

**RM 378**  
**PORTABLE**  
MDA Reg.No : GB10476120-46946

**ANGELBISS Valve  
Holding Chamber**  
Makes a metered-dose  
inhaler easy to use. Suitable  
for children and the elderly.

Infant (5808)  
Child (58080)  
Adult (58079)  
**RM 60**  
MDA Reg.No : GMD71231669618A

**Take Note :**

**7 DAYS  
RETURN POLICY**

- 6** 6 Months Installment Available.
- 12** 12 Months Installment Available.
- 36** 36 Months Warranty.
- 60** 60 Months Warranty.



All these medical devices registered under Act 737

\*Important Notice : T&Cs Apply. | Images are for illustration purposes only. | Price subject to change without prior notice | Price display is Alpro Member Price. |  
| Installment Available For CIMB & Maybank Credit Card Holder Only.



Recommended By  
The Malaysian Society  
Of Rehabilitation

PRICE DISPLAY IS  
**ALPRO** MEMBER  
PRICE

# POST-DISCHARGE CARE CLEAN & EASY DIAPER & UNDERPAD



**BEST SELLER**

**MEDI PREMIUM UNISEX 10S**  
Size / Waist :  
M / 77 - 115 cm  
[100067636]

~~RM 34<sup>60</sup>~~  
**RM 29<sup>60</sup>**

Absorbency:  
●●●●●●●●●●  
○○○○○

**MEDI PREMIUM UNISEX 10S**  
Size / Waist :  
L / 90 - 127 cm  
[100067644]

~~RM 38<sup>33</sup>~~  
**RM 33<sup>50</sup>**

Absorbency:  
●●●●●●●●●●  
○○○○○

**ABSORBA Nateen SOFT**  
Size / Waist :  
M / 95 - 125 cm [63702]  
L / 115 - 150 cm [63703]

~~RM 17<sup>90</sup>~~ ~~RM 22<sup>60</sup>~~

Absorbency: ●●●●●●●●●●○○○○○

**ABSORBA Nateen PLUS**  
Size / Waist :  
M / 95 - 125 cm [63704]  
L / 115 - 150 cm [63705]

~~RM 21<sup>80</sup>~~ ~~RM 25<sup>80</sup>~~

Absorbency: ●●●●●●●●●●●●○○○

**ABSORBA Nateen SUPER**  
Size / Waist :  
M / 60 - 120 cm [64209]  
L / 80 - 160 cm [64210]  
XL / 100 - 170 cm [65054]

~~RM 30<sup>80</sup>~~ ~~RM 35<sup>80</sup>~~

Absorbency: ●●●●●●●●●●●●●●○○○

**ABSORBA AFINA Adult Pants 10'S**  
Size / Waist :  
M 10S / 60 - 120 cm  
[73275]

~~RM 21<sup>90</sup>~~

Absorbency: ●●●●●●●●●●○○○○○

**ABSORBA AFINA Adult Pants 9'S**  
Size / Waist :  
L 9S / 115 - 150 cm  
[73276]

~~RM 21<sup>90</sup>~~

Absorbency: ●●●●●●●●●●●●○○○

**ABSORBA AFINA Adult Pants 8'S**  
Size / Waist :  
XL 8S / 100 - 160 cm  
[73277]

~~RM 21<sup>90</sup>~~

Absorbency: ●●●●●●●●●●●●●●○○○

**CERTAINTY Adult Tape M 10S**  
Size / Waist :  
M / 78 - 105 cm  
[67484]

~~RM 18<sup>90</sup>~~

Absorbency: ●●●●●●●●●●○○○○○

**CERTAINTY Adult Tape L 8S**  
Size / Waist :  
L / 90 - 131 cm  
[72515]

~~RM 18<sup>90</sup>~~

Absorbency: ●●●●●●●●●●●●○○○

**CERTAINTY Dry Pants**  
Size / Waist :  
M / 65 - 90 cm 11S [55504]  
L / 80 - 105 cm 9S [72508]  
XL / 95 - 125 cm 8S [67482]

~~RM 17<sup>90</sup>~~

Absorbency: ●●●●●●●●●●○○○○○

**TENA VALUE**  
Size / Waist :  
M / 81 - 112 cm  
L / 114 - 147cm  
[100046028]  
[100046036]

**GUARANTEED LOWEST PRICE**

~~RM 26<sup>88</sup>~~ ~~RM 30<sup>88</sup>~~

Absorbency: ●●●●●●●●○○○

**TENA SLIP SUPER**  
Size / Waist :  
M / 71 - 122 cm  
L / 91 - 144cm  
[11023]  
[12108]

~~RM 26<sup>88</sup>~~ ~~RM 30<sup>88</sup>~~

Absorbency: ●●●●●●●●○○○

**TENA Proskin Pants PLUS**  
Size / Waist :  
M / 80 - 110 cm [57553]  
L / 100 - 135cm [11327]  
XL / 120 - 160cm [53923]

~~RM 27<sup>40</sup>~~ ~~RM 38<sup>88</sup>~~

Absorbency: ●●●●●●●○○○

**DR.P by TENA**  
Size / Waist :  
M / 81 - 112 cm [66389]  
L / 114 - 147cm [66392]  
XL / 127 - 157 cm [66393] Dry Also Comfortable

~~RM 15<sup>40</sup>~~

Absorbency: ●●●●●●○○○○○

**HICARE Pants Extra Absorb 10S**  
Size / Waist :  
XXL / 146 - 178 cm  
[100154251]

~~RM 25<sup>50</sup>~~

Absorbency: ●●●●●●○○○○○

**HICARE Adult Diapers Extra Dry 10S**  
Size / Waist :  
XXL / 103 - 164 cm  
[100154202]

~~RM 25<sup>50</sup>~~

Absorbency: ●●●●●○○○○○

\*Important Notice : T&Cs Apply. | Delivery charge excluded. | Images are for illustration purposes only. | Installment Available For CIMB & Maybank Credit Card Holder Only. | Price subject to change without prior notice. | Price display is Alpro Member Price. |





UNDERPAD

**MEDI Underpad**  
75cmx75cm 10S

[70099]

**PROTECT  
BEDSHEET**

RM **14<sup>50</sup>**



**ABSORBA Nateen SOFT**  
Underpad

75cmx75cm 10S

[64211]

RM **14<sup>80</sup>**

**PROTECT  
BEDSHEET**



**TENA Underpad**  
60cm X 75cm 8S

[10020]

RM **13<sup>10</sup>**



WIPES

**MEDIWIPES**  
Adult Wipes 40S

[69932]

RM **6<sup>50</sup>**



**MEDIWIPES**  
Anti-bacterial Wipes 40S

[71731]

~~RM 12<sup>90</sup>~~  
RM **10<sup>90</sup>**

**KILLS  
99.9%  
GERMS**



**TENA**  
Wet Wipes 40S

[44638]

RM **6<sup>80</sup>**



CREAM

**DD**  
Adult Diaper Cream  
No.1 Diaper Discomfortness  
Solution for Soothing,  
Relief, Protect.

[73525]

~~RM 51<sup>90</sup>~~  
RM **43<sup>90</sup>**

**PREVENTION IN 10 SECONDS**



**SUDOCREAM**  
Nappy Rash CR 125G

Prevents and treats  
nappy rash.

[79996]

~~RM 33<sup>85</sup>~~  
RM **25<sup>90</sup>**



**ESENTIEL**  
Adult Diaper  
Rash Cream  
150G

[29936]

~~RM 29<sup>90</sup>~~  
RM **28<sup>30</sup>**



## Extra Tips About Diaper



### 3 Features That A Good Diaper Should Have :

1



#### Wetness Indicator

Let you know it may be  
time for a diaper change.

2



#### Leak Guard Protection System

Provide leakage  
protection even with  
frequent movement.

3



#### Good Absorbency

For excellent absorption  
capacity and fluid retention  
to maintain the dryness.

1

#### Diaper Cream

To protect the  
skin from urine  
irritation.



2

#### Underpad

To protect the  
bedsheet from  
wetting due to  
urine leakage.



扫码学习



扫码学习

Scan and learn  
how to change  
a diaper.



\*Important Notice : T&Cs Apply. | Delivery charge excluded. | Images are for illustration purposes only. | Installment Available For CIMB & Maybank Credit Card Holder Only. |  
| Price subject to change without prior notice. | Price display is Alpro Member Price. |

# MEDI+ UNISEX ADULT DIAPERS LOYALTY PROGRAM

FOR SILVERCARE MEMBER ONLY



**GET 1 STAMP**  
WITH EVERY PURCHASE  
OF MEDI+ ADULT DIAPERS



**FREE**  
1 PACK OF  
MEDIWIPES



**FREE**  
1 PACK OF MEDI+  
ADULT DIAPERS



**FREE**  
2 PACK OF MEDI+  
ADULT DIAPERS



1<sup>ST</sup> JAN 2023 - 31<sup>ST</sup> DEC 2023



**ABSORBA™**  
nateen®

*Sweet  
Dream*



*with*

**ABSORBA™**   
nateen® MAXI PLUS

Soft and Breathable  
— ADULT DIAPERS —



**Comfortable &  
Strong Absorbency**

Product Range	Concept	Absorbency	Size / Waist
ABSORBA™ Nateen® MAXI PLUS 	Night ADULT DIAPERS		M / 95 - 125 cm L / 115 - 150 cm



For more information,  
please contact us or  
visit our website:  
[www.absorbadiap.com](http://www.absorbadiap.com)



HQ: **TURBO-MED PTE LTD**  
22 Joo Koon circle Singapore 629054  
Tel : (65) 6742 1968  
Fax : (65) 6742 1970  
Email : sales@turbo-med.sg



**TurboMed Malaysia Sdn. Bhd.**  
37-3, Jalan PJU 1/41, Block D1, Dataran Prima,  
47301 Petaling Jaya, Selangor Darul Ehsan, Malaysia.  
Tel : (603) 7887 0007  
Fax : (603) 7887 0007



“ Your meter is  
**OLD? SPOILT?  
NOT ACCURATE?** ”



**HOW TO TRADE-IN?**

**1**



Bring Your Old Meter  
Scan for Your Nearest  
Alpro Pharmacy Outlet.

**2**

Upgrade to new meter  
Exclusive trade-in rebate

**5 YEARS  
Warranty**



~~RM 332~~ **RM 278**  
MDA Reg.No :GB879322041739



~~RM 389~~ **RM 269**  
MDA Reg.No : GB54115886818



~~RM 699~~ **RM 519**  
MDA Reg.No :GB7560821-56039

**What Do We Do  
With Your  
OLD UNIT?**

We Donate For Charity  
Purpose on behalf of you!



Calibration will be done to ensure good  
condition before donation.  
(Inform you on the beneficiary.)

Collaboration with :  **The Malaysian Society  
Of Rehabilitation**

All these medical devices registered under Act 737  
\*Important Notice : T&Cs Apply. | Images are for illustration purposes only.



# POST-DISCHARGE CARE ONE FOR EVERY FAMILY HOME MONITORING

PRICE DISPLAY IS  
**ALPRO MEMBER PRICE**

## THERMOMETER

**LYCO**  
Infrared Ear & Forehead  
Thermometer BM-IRT1603  
(75349)



~~RM 369~~ **RM 169**

MDA Reg.No : GB347932042395

**60** 60 Months Warranty  
On Manufacturing Defect

**For VIP Members only**

## BLOOD PRESSURE METER

**ROSSMAX Z5**  
| Specific Arrhythmia Detection |  
| Rechargeable Lithium-ion Battery |  
| Lifetime Calibration |

(300046770)

~~RM 699~~  
**RM 551**

MDA Reg.No : GB7560821-56039



**FORA P30 PLUS**  
| Smart Bp Meter - Readings  
Connectable To Smartphone |  
| Accurate & Clinically Validated |  
| 60 Test Memories With Dates & Time |

(70875)

~~RM 389~~  
**RM 299**

MDA Reg.No : GB54115886818



**INMOED M1**  
| Arrhythmia detection |  
| Large wording display |  
| 2 user x 120 memories |

(300144609)

~~RM 175~~  
**RM 150**

MDA Reg.No : GB3374022-104196



**OMRON HEM 7156**  
| Hypertension indicator |  
| Body movement detection |  
| 60 test memories with  
Dates & time |

(73763)

~~RM 332~~  
**RM 289**

MDA Reg.No : GB87932204739



**ROSSMAX AW150**  
| Blood pressure level  
indication |  
| Movement detection |  
| Irregular heartbeat  
detection |

(72276)

~~RM 290~~  
**RM 199**

MDA Reg.No : GB39668337717



## GLUCOMETER

**Contour Plus One Meter**  
Start kit 25's  
| Readings connectable to  
smartphone |  
| Highly accurate |  
| Big LCD, easy to read |

(66773)

~~RM 145~~ **RM 120**

MDA Reg.No : IVDC133901025781



**OR**

**MORE AFFORDABLE!**  
Top Recommended  
Blood Glucose Control  
**sugO365™**  
where life gets sweeter  
Subscription Plan

**test strip  
SAVE UP TO  
50%**

**FREE**  
Contour Plus  
One Meter

**365 DAYS**  
Real Time Nutritionist &  
Dietitian Consultation

**ACCU-CHEK GUIDE ME KIT**  
With Test Strip 25s  
| Wireless connection to  
smartphone | Simply easy |  
| Proven accuracy |

(80936)

**RM 99**

MDA Reg.No : IVDC11506143718



**FREESTYLE FREEDOM**  
Lite Starter Kit 10's  
| Simple and easy testing |  
| No coding technology |  
| Tiny blood sample size |

(50955)

**RM 62**

MDA Reg.No : IVDC1334046917



**ONE TOUCH ULTRA**  
Plus flex Starter kit 25's  
| Quick and easy to use |  
| Fast, accurate with a tiny  
blood sample |  
| Big LCD, easy to read |

(64205)

**RM 95**

MDA Reg.No : IVDC51144308218



**SCAN & SHOP NOW**  
Monitoring Device

All these medical devices registered under Act 737

\*Important Notice : T&Cs Apply. | Images are for illustration purposes only. | Price subject to change without prior notice | Price display is Alpro Member Price. |  
| Installation Available For CIMB & Maybank Credit Card Holder Only. | Please consult your doctor for the interpretation of results and diagnosis. |

MEET OUR **TOP 8**

# Certified **REPAIR SPECIALIST**

Your Expert In Fixing Medical Rehab Item



**Wheelchair Tyre, Seat, Arm, Footrest, Alignment, Routine Servicing.**  
**Accuracy Check For Blood Pressure Monitoring Meter or Glucometer.**  
**Change Walking Aids Tip, Hospital Bed, Oxygen Concentrator, Ripple Mattress.**



Sheikh Mohd Izwan  
Alpro Pharmacy, Kuantan



Sazli bin Ibrahim  
Alpro Pharmacy, Melaka



Eric Loh  
Alpro Pharmacy, Negeri Sembilan



Calvinsten Lee  
Alpro Pharmacy, Kuching



Ng Jing Si  
Alpro Pharmacy, Johor



Muhamad Asraf Bin Roslan  
Alpro Pharmacy, Kelantan



Syed Farid Danish  
Alpro Pharmacy, Pahang



Ph Liew Jyl Jun  
Alpro Pharmacy, Penang



Time To Service? Need A Fix?

Call Us Now : **019-750 0612**

**FORA®**



Clinically Validated



Bluetooth SMART

**P30 Plus BT**  
ACTIVE WIRELESS Plus  
MULTI-MODE BLOOD PRESSURE  
MONITORING SYSTEM

- Irregular Rapid Beat (IRB) Technology Detection
- Supports Oscillometric and Auscultatory Measurement

- 200 Memory with date and time
- Universal cuff (24 - 43 cm)
- Automated Averaging Technology gives average of 3 measurement for more accurate results



MDA Registration No.: C654115886218

**FORA® 6 Plus**  
Multi-Functional Monitoring System

Multiparameters

- BG Blood Glucose
- HCT Hematocrit
- Hb Hemoglobin
- KB Ketone
- TC Total Cholesterol
- UA Uric Acid



MDA Reg. No.: IVD036114719-20481

- Beep Sound : Yes, ON / OFF / Universal Tone®
- Ketone Warning : Yes, if he value higher than 13.3mmol/L
- Meal tag / mode AutoQC mode; GEN / AC / PC
- LCD Backlight & Strip Indication Light
- Strip Ejection
- Power : 1 x AAA battery
- Battery life : At least 1,000 times
- Memory Capacity 1,000 memory sets

Registered under Act 737

KINSMEDIC MDA NO: MDA-1331-WDP120

Please consult your healthcare professional for the interpretation of result and diagnosis.



# INNOMED™

The Vision Of A Better You



GB3374022104196



GA10416020-38537

GA10416020-38537



IVDC2421119-28156



IVDC31053776718

Scan Here To Shop Online Now





**RM 120**

**Contour® Plus One Starter Kit with 25's strip**  
MDC 33901325718



**RM 79**

**Contour® Plus Starter Kit with 25's strip**  
MDC96551182818



**FREE**

1 box of Microlet lancet 100's with every purchase of 1 unit Contour® Plus/Contour® Plus One starter kit. (while stocks last)

Visit [www.diabetes.ascensia.my](http://www.diabetes.ascensia.my) for more information.  
Please consult your healthcare professional for interpretation of result and diagnosis.

Distributed by: Ethos Healthcare Sdn Bhd.  
A-4-11, Tamarind Square, Persiaran Multimedia, 63000 Cyberjaya, Selangor.  
Ascensia, the Ascensia Diabetes Care logo, CONTOUR, No Coding logo, Second-Chance Sampling, and Second-Chance Sampling logo are trademarks of Ascensia Diabetes Care Holdings AG. All other trademarks are the property of their respective owners. ©2021 Ascensia Diabetes Care Holdings AG. All rights reserved.  
Registered under Act 737 and MDA registration no MDC 96551182818, MDC 33901325718  
ADG.MY/CP202104022



# Specially designed to help sugar management

**RM 98.90**

Contro Eazy Now 850g



Low GI with unique complex carbohydrates



CoQ10 + L-Carnitine complex



High fiber & prebiotics blend (Fibersol-2 and FOS)



Chromemate™ (patented niacin-bound chromium)



Heart healthy lipid blend Omega 6:Omega 3 (2:1), zero cholesterol



ETHOS HEALTHCARE

For more information, please visit:  
[www.ethoshealthcare.com.my](http://www.ethoshealthcare.com.my)

Distributed by: Ethos Healthcare Sdn Bhd.  
A-4-11, Tamarind Square, Persiaran Multimedia, 63000 Cyberjaya, Selangor.  
Customer careline: +603 8800 8380 / 1700 82 8320



**RM3 REBATE**

Only on 18th July, 18th August, 18th September 2023



AC Adaptor  
Worth: RM70

**AUTOMATIC BLOOD PRESSURE MONITOR MODEL X1**

Product Reg. No.: GB39668337717

Rossmax **Real Fuzzy Technology** determines ideal cuff pressure based on one's systolic blood pressure and arm size to prevent inaccurate readings caused by erroneous cuff inflation levels.

**Features**

Cuff Detection	Movement Detection	Blood Pressure Level Indication	Irregular Heartbeat Detection	Universal Cone Cuff 24 - 40cm

**FREE LIFETIME CALIBRATION**

According to **British Hypertension Society (BHS)**: It is important to have the blood pressure monitor serviced and calibrated according to the manufacturer's guidelines. We recommend you to send your blood pressure monitor for calibration every 2 years.





PRICE DISPLAY IS  
**ALPRO MEMBER PRICE**

# POST-DISCHARGE CARE GET WELL SOON RECOVERY SUPPORT



**MEDINET RESPIROGRAM SPIROMETER**  
| Help to strengthen respiratory musculature |  
| Help to restore and maintain lung capacity by encouraging slow, deep breathing |

[33618]  
**RM 45**



**APEX COMTENS-III**  
For pain relief

[58661]  
~~RM 328~~  
**RM 268**

MDA Reg.No : GB5328420-46813

**ANZEN BA2132-B Digital Mini Gym Bike**  
For muscle weakness.  
To prevent joint stiffness and promote blood circulation.



~~RM 159.90~~ **RM 129.90**

MDA Reg.No : GA4904020-41539

**UGOKU Armsling UA-012 Adjustable Shoulder Strap**



**RM 19**

MDA Reg.No : GA476721-57414

**ATROFLEX Gel 100ML**  
For joint and muscle



**RM 59.90**

**UGOKU BU-5027L Therapack Hot / Cold**  
SIZE: M / L



**RM 26 - RM 28**

MDA Reg.No : GA7517921-52327

**UGOKU Therafit Ball**



Different Color Different Resistance

PINK	BLUE	GREEN	ORANGE
EXTRA SOFT	SOFT	MEDIUM	FIRM
BU-1084	BU-2083	BU-3082	BU-4088
[73454]	[73455]	[73456]	[73457]

**RM 29**

MDA Reg.No : GA7507220-48785

**UGOKU Ice & Hot Therapy Bag BU-905**



~~RM 52.90~~ **RM 45**

MDA Reg.No : GA9229721-52621

**DURABAND Exercise Band 1.5M**



Different Color Different Strength.

RED	GREEN	BLUE
LIGHT	MEDIUM	HEAVY
0.2MM	0.3MM	0.3MM
[75260]	[100001940]	[75259]

**RM 12.90**

MDA Reg.No : GMD56590764217A

**UGOKU PE Finger Splint UF-013**

For sustain the finger in good position.



Size: S [74517] L [74519]  
M [74518] XL [74520]

**RM 14**

MDA Reg.No : GA737821-55833



**UGOKU Anti-embolism Stocking UA-010**

- Reduces the formation of thrombosis.
- Suitable for post-surgery and bedridden.

Size: XS [70835] L [71312]  
S [71310] XL [71313]  
M [71311] XXL [71314]

~~RM 79~~  
**RM 59**

MDA Reg.No : GA6357820-40765



**UGOKU High-high Compression Stocking UA-017BK**

- To prevent varicose veins.
- Suitable for long sitting or standing hour, pregnant woman & travelling.

Size: **BEIGE** S [74508] M [74509] L [74510] XL [74511] XXL [74512]  
**BLACK** S [74503] M [74504] L [74505] XL [74506] XXL [74507]

~~RM 120~~  
**RM 95**

MDA Reg.No : GA8927621-57430

**Take Note : 12 12 Months Warranty.**

All these medical devices registered under Act 737

\*Important Notice : T&Cs Apply. | Images are for illustration purposes only. | Price subject to change without prior notice | Price display is Alpro Member Price. |

| Installment Available For CIMB & Maybank Credit Card Holder Only.

**NEW**  
**AMMELTZ**  
**YOKOYOKO**  
**GOLD**

Contain Approximately

**4X**

**Pain Relief**  
**Ingredients\***



**FOR NECK & SHOULDER PAIN**

**Quick Penetration, Fast Relief**



**MUSCULAR PAIN**



**LOW BACK PAIN**



**BRUISES**



**SPRAINS & JOINT PAIN**



KXLA734622011 - Expiration Date: 31 December 2022  
This is a medical product advertisement.

**KOOL FEVER**  
**SPRAY**

**Hot & Sweaty?**

**Spray for**  
**Icy Relief**  
**Cool Sensation Following**  
**Like Air-Conditioner**



**Cooling**  
**Spray For Shirt**



**KOBAYASHI**



Recommended By  
The Malaysian Society  
Of Rehabilitation

PRICE DISPLAY IS

**ALPRO** MEMBER  
PRICE

# POST-DISCHARGE CARE SUPPORT & BRACES



Recommended by  
Physiotherapist



## FOR TREATMENT RECOVERY USE



Size:  
S [70832]  
M [71304]  
L [71305]

### UC-007 Clavicle Brace

| Provides stabilization to the clavicle area | Correction of poor posture and rounded/ slumped shoulders |

**RM 67**

MDA Reg No : GA3437020-40734



Size:  
S [74498]  
M [74499]  
L [74500]  
XL [74501]  
XXL [74502]

### US-015 Neoprene Adj. Shoulder Support

| Helps to reduce pain and speed up recovery at shoulder area. | Best For Shoulder Injury |

**RM 78**

MDA Reg No : GA8545721-58567



Size:  
S/M [70831]  
L/XL [71303]  
XXL [71596]

### UB-006 Comfort-pull Back Brace (Mesh)

| Suitable for acute low back pain | Postoperative care |

**RM 198**

MDA Reg No : GA452920-40729



Size:  
S [70844]  
M [71333]  
L [71334]  
XL [71335]  
XXL [71336]

### UA-011 2-panel Abdominal Binder

| Provides proper comfort | Compression to the abdomen | Suitable for post-surgery and postpartum |

**RM 103**

MDA Reg No : GA5872720-40744



### UA-014 Maternity Belt

| Pregnant support belly belt | Postpartum hip recovery belt |

**RM 62**

MDA Reg No : GA7356221-55829



Size:  
S [70816]  
M [71299]  
L [71300]

### UN-001 Soft Cervical Collar

| Provides support & motion control | Suitable for whiplash injury and stiff neck | Neck muscle spasms |

**RM 34**

MDA Reg No : GA7944220-60813



Size:  
S/M [70820]  
L/XL [71301]

### UW-004 Comfort-pull Wrist Splint W/2 Stays

| Suitable for injured wrist | Support the wrist |

**RM 72**

MDA Reg No : GA5669520-40738



Size:  
S/M [70821]  
L/XL [71302]

### UT-005 Comfort-pull Thumb Spica

| Support the thumb | Suitable for injured thumb joints |

**RM 65**

MDA Reg No : GA5793820-40760



Size:  
Left [70818]  
Right [70819]

### UF-003 Dynamic Finger Exerciser (Left / Right)

| Enhance strenght of fingers | Suitable for post-stroke rehabilitation |

**RM 159**

MDA Reg No : GA5915120-40730



### UE-002 Tennis Elbow Support With Gel Pad

| Provide adjustable compression | Suitable for tennis elbow pain |

FREE Size [70817]

**RM 62**

MDA Reg No : GA4643019-32283



### UK-008 Cool Grey Snug Knee Support W/Gel Pad & Spiral Stay

**Extra Support** For Treatment

Size:  
S [70833]  
M [71306]  
L [71307]  
XL [71308]  
XXL [71309]

~~RM 269~~  
**RM 172**

MDA Reg No : GA3785720-40660



### Things To Take Note When Using Knee Brace.

- Do not wear** support or braces **while sleeping.**
- Recommended to **take off** the support or braces and rest for **5 minutes every 2 hours.**
- Over tightness** will cause discomfort and affect blood circulation.

All these medical devices registered under Act 737

\*Important Notice : T&Cs Apply. | Delivery charge excluded. | Images are for illustration purposes only. | Installment Available For CIMB & Maybank Credit Card Holder Only. | Price subject to change without prior notice. | Price display is Alpro Member Price. |

## FOR LIFESTYLE PREVENTION USE



Size:  
S [70838]  
M [71319]  
L [71320]  
XL [71321]  
XXL [71322]

### UL-203 Inno-pattern Lumbar Support

| Provides medium support to lumbar | Suitable for acute low back pain | Postoperative care |

**RM 188**

MDA Reg.No : GA6667820-60770



Size:  
S [70836]  
M [71315]  
L [71316]

### UE-201 Inno-pattern Elastic Elbow Support

| Enhance elbow comfort when in motion | Suitable for protection for daily activities |

**RM 34**

MDA Reg.No : GA5212420-41018



Size:  
S [70837]  
M [71317]  
L [71318]

### UW-202 Inno-pattern Elastic Wrist Support

| Enhance wrist comfort when in motion | Suitable for protection for daily activities |

**RM 29**

MDA Reg.No : GA5610320-40740



Size:  
S [70843]  
M [71329]  
L [71330]  
XL [71331]  
XXL [71332]

### UK-207 Inno-pattern Elastic Knee Support

| Enhances knee comfort in motion | Suitable for protection for daily activities |

**RM 35**

MDA Reg.No : GA5993320-40741



Size:  
S [70842]  
M [71325]  
L [71326]  
XL [71327]  
XXL [71328]

### UK-206 Dynamic Taping Knee Support

| Provides better protection and stabilization | Suitable for knee joint pain |

**RM 77**

MDA Reg.No : GA6861020-40750



### UK-204 New Ok Knee Support W/4 Spiral Stays & Silicone Pad

| Provide extra support | | Stabilization to patella | | Suitable for outdoor sport activities |

Size: Well Fit 30cm to 46cm [70839]

**RM 107**

MDA Reg.No : GA9277920-40747



### UK-205 Reinforced Patella Strap

| Provide extra support | | Stabilization to patella | | Suitable for Jumper's knee/ patella tendonitis |

Size: Well Fit 30cm to 46cm [70840]

**RM 70**

MDA Reg.No : GA9724020-40815



Size:  
S [70841]  
M [71323]  
L [71324]

### UA-208 Inno-pattern Elastic Ankle Support

| Enhance ankle comfort when in motion | Suitable for protection for daily activities |

**RM 36**

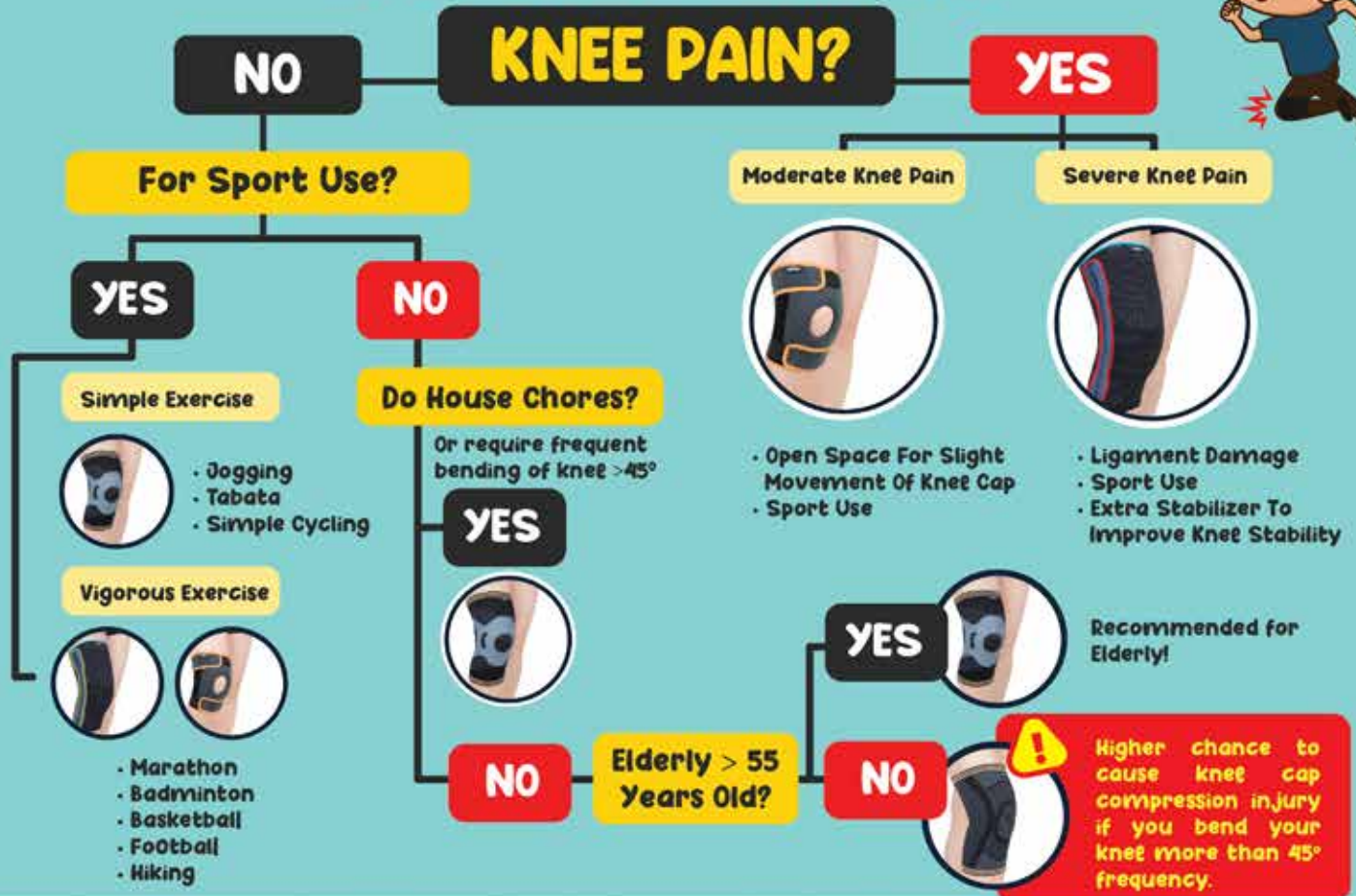
MDA Reg.No : GA7724620-50534

**Ugoku**  
Germany Design & Technology

**FREE** 7 Days Exchange Return Guarantee  
If Any Manufacturing Defect

**FREE** Worth RM50 Physio Online Consultation

## How to Choose The Suitable Knee Support!



All these medical devices registered under Act 737

\*Important Notice : T&Cs Apply. | Delivery charge excluded. | Images are for illustration purposes only. | Installment Available For CIMB & Maybank Credit Card Holder Only. | Price subject to change without prior notice. | Price display is Alpro Member Price. |

**UK-008**  
**COOL GREY SNUG KNEE SUPPORT**  
**W/ GEL PAD & SPIRAL STAY**



-   
**Lightweight**
-   
**Breathable**
-   
**Durable**
-   
**FOUR WAY**

Registered under Act 737 with Medical Device Authority Malaysia  
Registration number : GA3785720-40660

**METABOLIC+**

SIMPLY LOVE & NOURISHMENT



# MOBILITY FOR GOLDEN YEARS

## METABOLIC + *Otéine*



### RISK OF GETTING MUSCLE LOSS



REDUCED SPEED



WEAK GRIP



POOR BALANCE



REPEATED FALLS



WEIGHT LOSS



Why Installing

# TOILET SAFETY HANDRAIL

Is Important For Elderly At Home

Falls are major health issues affecting countries across the globe, with higher rates shown in the elderly group. Local statistics show that

**Every 1 in 3 elderly in Malaysia experienced at least one fall within a year.**

The reasons for high falling incidences among elderly are mostly related to their physical limitations and age.

For examples:

**1. People aged 60 years and above are prone to have osteoporosis, weaker muscles, and reduced balance ability.**

**2. Most elderly have poor visions, which explains why they have higher risks of trips and falls due to reduced stability. Our vision plays an important role in maintaining balance by adopting our body to different positions and movements. When stepping on uneven surfaces, walking up or down steps, we need to see clearly to avoid obstacles.**

The effects of falls could be devastating to the person as well as their family members. Old people are susceptible to hip and arm fractures, bruises, and reduced mobility following a fall.

The experience of fall might leave them negative psychological issues such as anxiety and depression. In severe cases, falls may lead to death if there is excessive bleeding or head injuries.

Thus, toilet safety rails are specially designed devices that help the elderly to use the toilet in an easier, safer, and more comfortable way and for fall prevention. They come in various models and designs. While some are attached to the toilet or wall, some are adjustable and movable. These devices are helpful for people with vision impairments, reduced mobility, strength, and balance issues.

## Top 3 Reasons To Install Safety Rails

### 1. Prevent Slips & Falls

With a proper toilet rail, there is something to grab on as extra support, to reduce the chances of losing balance and fall.

### 2. Aid In Improving Confidence & Independence

By providing extra supports like toilet rails, they will feel more relieved and safer to use the bathroom when they are alone.

### 3. Improve Stability & Comfortability

It is difficult to balance oneself if the toilet is wet and slippery. Specially when sitting on or stand up from low toilet bowls. With toilet rails installed, one can easily use the toilet with enhanced comfort and safety.





PRICE DISPLAY IS  
**ALPRO MEMBER PRICE**

# reli-able BATHROOM SAFETY SET-UP



## WHY GRAB BAR ?

"Bathroom Safety For Your Loved One."



MDA Reg.No : GA8754120-5147

reli-able  
**GRAB BAR BA2098**

Size : 14 inches [71030]

**RM 98**

Size : 24 inches [71033]

**RM 158**

Size : 18 inches [71031]

**RM 128**

**NYLON STAINLESS STEEL**



MDA Reg.No : GA8754120-5147

reli-able  
**GRAB BAR BA0298**

Size : 12 inches [71029]

**RM 89** **RM 68**



**POLYPROPYLENE**



MDA Reg.No : GA8754120-5147

reli-able  
**HANGING SHOWER SEAT BR2488**

**RM 398**

**NYLON STAINLESS STEEL**

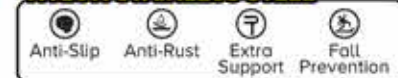


MDA Reg.No : GA8754120-5147

reli-able  
**FLIP-UP GRAB BAR BR0098-3**

**RM 298**

**NYLON STAINLESS STEEL**



MDA Reg.No : GA5936421-56565

reli-able  
**SHOWER SEAT WITH LEG BR9888**

**RM 298**

**NYLON STAINLESS STEEL**



MDA Reg.No : GA8754120-5147

reli-able  
**U-SHAPED GRAB BAR BA1098-3**

**RM 328**

**NYLON STAINLESS STEEL**



Registered under act 737

\* Call 019-659 7808 to arrange installation.

**FREE ( For Alpro Member Only )**

**Anti-Slip Mat**  
\*For Any Purchase Of RM250 And Above.



**SAVE MORE**

**For 3 Items**  
Get Package Price

**12 Months**

**Warranty**

**Extended**

**12 MONTHS WARRANTY**



Exclusive to  
**SILVERCARE MEMBERS**



# POST-DISCHARGE CARE HEAL FAST WOUND CARE



Recommended By  
The Malaysian Society  
Of Rehabilitation

PRICE DISPLAY IS  
**ALPRO MEMBER PRICE**

## HYGIENE



**AGBAC NANO SILVER** [71599]  
Disinfectant  
150ML

**ALCOHOL** (with prohibition sign)

✓ Safe For Kids  
✓ 24 Hours Protection

~~RM 45.88~~  
**RM 39**



**AGAINST 24** [56882]  
Disinfectant Spray  
100ML

**ALCOHOL** (with prohibition sign)

✓ Safe For Kids  
✓ 24 Hours Protection

~~RM 39.90~~  
**RM 26.90**



**HANDGUARD**  
Antibacterial Hand Wash  
500ML

Bergamot: [7212]    Rosemary [7211]

~~RM 9.90~~  
**RM 6.50**



**MEDIMASK 20 PCS**  
Buy 2 boxes FREE 1 box of  
Medi Mask KF Series  
[100048453]

**RM 49.80**



## WASH



**VIGILENZ HYDROCYN** [53149]  
Aqua Wound Care  
100ML

**RM 8.50**



**RINSCAP NS SODIUM**  
Chloride 0.9% W/V

1000ML [34928]    500ML [33477]

**RM 6.90**    **RM 5.90**



**VIGILENZ HYDROCYN**  
Aqua Wound Care

500ML [74790]    250ML [53150]

**RM 30**    **RM 16.50**



**DERMACYN** [19630]  
Wound Care  
500ML

**RM 35**



## APPLY FIRST AID



**HANSAPLAST** [100059195]  
Wound Healing  
Ointment  
50G

**RM 19**



**DR WOUND** [73849]  
Bioheal Gel First Aid  
20ML

**RM 38**



**SKIN FIX** [59680]  
Cream  
20G

**RM 30.50**



**3 LEG** [54596]  
Povidone Iodine  
30ML

**RM 3.90**



## CHRONIC WOUND



**DR WOUND PACK** [73985]  
Nano Silver Spray  
100ML + Bioheal Gel  
60ML

**RM 88**



**MEDIHONEY GEL** [63370]  
44ML

**RM 82.60**



**CAVIDAGEL AG** [62412]  
30G

**RM 42**



**S&N INTRASITE** [12473]  
Gel Hydrogel Dressing  
15G 1S

**RM 31.50**



## COVER



**UNIGLOVES**  
Non Woven Gauze Swab  
100'S

[41575 / 65703 / 65704]  
5x5cm / 7.5x7.5cm / 10x10cm

**RM 3**    **RM 5**    **RM 9**



**S&N MELOLIN LOW**  
Adherent Absorbent Pad  
5'S

[12471 / 12472]  
5x5cm / 10x10cm

**RM 7.50**    **RM 12.20**



**DUODERM** [60352]  
Extra Thin (187955)  
10X10CM 10'S  
(Loose Pack Available)

**RM 64.90**



**AQUACEL AG+ EXTRA** [60358]  
10X10CM (413567) 10'S  
(Loose Pack Available)

**RM 255**



## HOLD



**UNIGLOVES** [765544]  
TRANSPARENT  
Film Dressing-Roll  
10CM X 10M 1S

**RM 8.50**



**3M MICROPOR**  
BOX (Adhesive Tape) 1S

3" X 10YD [144625]  
2" X 10YD [149521]  
1" X 10YD [144624]  
0.5" X 10YD [144623]

**RM 2.10** — **RM 12.50**



**UNIGLOVES**  
Self Adhesive Bandage

2.5CMX4.5M [165708]  
5CMX4.5M [149944]  
7.5CMX4.5M [155902]  
10CMX4.5M [165709]

**RM 4.50** — **RM 9.50**



\*Important notice : T&Cs Apply. | Delivery charge excluded. | Images are for illustration purposes only. | Installation Available For CIMB & Maybank Credit Card Holder Only. | Price subject to change without prior notice. | Price display is Alpro Member Price. |



**alpro homecare**  
Bringing Care to Home

# Home Care Services

## NURSING CARE

- Sponging / bathing
- Change diaper
- Basic physiotherapy/ passive stretching exercise
- Feeding
- Serve medications

## PROCEDURE

- Urine catheter insertion and removal
- Feeding tube insertion and removal
- Wound dressing and care
- Stoma care
- Injection-medication / vaccination
- Intravenous (IV) drip
- Blood tests

## DOCTOR ASSESSMENT

- Personalize treatment plan

**CONTACT US NOW!**



Call or WhatsApp us now for enquiries:

**019-396 7828**

WHEN THE *healing* COMES FROM HOME...

## OUR SERVICES

**Nursing Care** **RM110**

**Medical Procedure** **RM110**

**Nursing Care + Medical Procedure** **RM110**

**Doctor Assessment** **RM250**

## NURSING PACKAGE

**RM990** x10 visits

**RM1800** x20 visits

*Terms & Conditions apply*

1. Turn around time for deployment will commence once full payment received.
2. Surcharge is applicable if the distance to your doorstep is more than 10km from our nearest assigned station.
3. Price quoted is for service fee only excluding medication and / or consumables.



[alproclinic.com/homecareservices](http://alproclinic.com/homecareservices)

Alpro Home Care

Operation Hours:  
**9:00am - 9:00pm (Daily)**



In-the-ear (ITE)



In-the-canal (ITC)



Receiver-in-canal (RIC)



behind-the-ear (BTE)

# Pemilihan Alat Bantu Dengar Yang Sesuai

## 1. Kepentingan ujian pendengaran

Ujian pendengaran adalah sangat penting bagi menentukan tahap dan jenis masalah pendengaran seseorang.

## 2. Konsultasi bersama Audiologist

Audiologist akan mencadangkan alat bantu dengar yang sesuai kepada pengguna mengikut tahap pendengaran mereka. Ini membolehkan mereka dapat mendengar dan berkomunikasi dengan lebih baik.

Terdapat 5 tahap pendengaran:



## 3. Percubaan Alat Bantu Dengar

Sebelum beli Alat Bantu Dengar, pengguna digalakkan untuk mencuba terlebih dahulu bagi memastikan alat tersebut selesa untuk digunakan oleh pengguna.

## Amplifier vs. Alat Bantu Dengar

### Pendengaran

- ✗ **Amplifier**  
Boleh menjejaskan lagi pendengaran kerana bunyi yang kuat.
- ✓ **Alat Bantu Dengar**  
Tidak menjejaskan pendengaran kerana bunyi yang diberi adalah mengikut tahap pendengaran pengguna.

### Percakapan

- ✗ **Amplifier**  
Percakapan menjadi tidak jelas terutama di tempat bising.
- ✓ **Alat Bantu Dengar**  
Dapat mendengar percakapan dengan lebih baik termasuk di tempat bising.

### Kekuatan Bunyi

- ✗ **Amplifier**  
Menguatkan bunyi secara keseluruhan.
- ✓ **Alat Bantu Dengar**  
Menguatkan bunyi mengikut tahap pendengaran.



Disediakan oleh:  
Audiologist Afifah  
Sarjana Muda Audiologi  
(Kepujian) UIAM

# Hear Great With Mimitakara®

愛は君の声が聞こえる

JAPAN TECHNOLOGY



SCAN TO KNOW MORE

Registered under A01 731  
with Medical Device Authority Malaysia  
Registration number:  
(04715)20-4702 (M75)  
(086)000-4044 (TFC)

~~RM5000~~  
**ONLY AT RM2750**

**365**  
DAYS

1 YEAR WARRANTY

**7** DAYS **FREE TRIALS** **RENTAL PROGRAM**

7 DAYS FREE TRIAL

30 DAYS RENTAL PROGRAM

**FREE**  
CLEANING

FREE CLEANING +  
STERILIZATION FOR LIFETIME

**248**  
OUTLETS

READY TO  
ASSIST YOU



PROFESSIONAL ASSISTANCE  
PROVIDED ANYTIME

# HOW TO RENT?

- 1** Pick Your Package
- 2** Contact Us **019 - 750 0612**  
Provide Us Your Name, Location & Contact Number.
- 3** Confirm & Payment

## RENTAL Hospital Bed

\* Addition **RM20** processing fee.

### STEP 1: Pick Your Package

**MANUAL BED** OR **ELECTRIC HOMECARE BED**



MDA Reg.No : GMD57430969219A  
\* Subject to availability



MDA Reg.No : GA8473223-132542  
\* Subject to availability

**1 WEEK**  
**RM80**

**1 MONTH**  
**RM200**

**3 MONTHS**  
**RM450**  
(RM150/month)

**RENTAL BUNDLE**  
with Tubular Ripple Mattress

Top up only  
RM80 per month.

**RM690**

**SAVE RM360**

**6 MONTHS**  
**RM840**  
(RM140/month)

**RENTAL BUNDLE**  
with Tubular Ripple Mattress

Top up only  
RM75 per month.

**RM1,290**

**SAVE RM810**

\* Returnable deposit **RM400** will be collected.

### ELECTRIC BED



MDA Reg.No : GA9566520-49347  
\* Subject to availability

**1 WEEK**  
**RM120**

**1 MONTH**  
**RM300**

**3 MONTHS**  
**RM750**  
(RM250/month)

**RENTAL BUNDLE**  
with Tubular Ripple Mattress

Top up only  
RM80 per month.

**RM990**

**SAVE RM360**

**6 MONTHS**  
**RM1,440**  
(RM240/month)

**RENTAL BUNDLE**  
with Tubular Ripple Mattress

Top up only  
RM75 per month.

**RM1,890**

**SAVE RM810**

\* Returnable deposit **RM500** will be collected.

### STEP 2: Delivery Fee

\* Depend on Address Area.

# 刚出院? BARU DISCAJ

## KAMI HANTAR DALAM SECEPAT MASA 4 JAM!

最快4小时送到你家! 让你不再无助

ANDA TIDAK KESEORANGAN!

All these medical devices registered under Act 737

\*Important Notice : T&Cs Apply. | Images are for illustration purposes only. | Price subject to change without prior notice. | Installation Available For CIMB & Maybank Credit Card Holder Only. | 5% discount for both Hearing Aids and Powerlife Magnesium for Allianz Insurance customer. |

# 出租服务 SEWA



Recommended By  
The Malaysian Society  
Of Rehabilitation

**RM6,000  
TAX RELIEF**  
Cost Of Basic Supporting  
Equipment For Disabled  
Self, Spouse, Child Or Parent.

\* Addition RM20 processing fee.  
\* Returnable deposit RM400 will be collected.

## RENTAL Ripple Mattress

<b>1 WEEK</b> RM60	<b>1 MONTH</b> RM150
<b>3 MONTHS</b> RM300	<b>SAVE RM150</b>
<b>6 MONTHS</b> RM550	<b>SAVE RM350</b>



**Why Is The Mattress Not For Rent?**  
For user hygiene purposes. As it may be hard to avoid excretes such as urine, poop and blood from previous users staining on the mattress.



## Mattress For Purchase

<p>[70137] <b>RM300</b> 3 Inches Folded Mattress</p> <p>[61969] <b>RM400</b> 4 Inches Folded Mattress</p> 	<p><del>RM650</del> <b>RM480</b> <b>PWP</b> 4 Inches High Density Foam Support Mattress</p> <p><b>SPECIAL PRICE!</b> For Purchase / Rental Hospital Bed</p>  <p>[72467]</p>
---	---

All these medical devices registered under Act 737

Rental With

# Special Purchase Deal



**GKB Lion's Mane Mushroom**  
~~RM198~~ **SAVE RM59**  
**RM139**



**Home Physiotherapy Treatment**  
~~RM150~~ **SAVE RM70**  
**RM80** / session  
Depends on Location.  
\*Check out with our staff now



SCAN & RENT NOW

Rental With

# Special Purchase Deal



GKB Lion's Mane Mushroom

~~RM 198~~ **SAVE RM59**  
**RM 139**

Product Reg.No : MAL21036127TC



Home Physiotherapy Treatment

~~RM150~~ **SAVE RM70**  
**RM80** / session  
Depends on Location.

\*Check out with our staff now



\* Extra RM100 sanitisation fee for COVID cases. (For Oxygen Concentrator 10 only.)  
\* Returnable deposit RM500 will be collected for any oxygen tank/oxygen concentrator 5 & 10LPM/package.

## RENTAL Oxygen Therapy

1



MDA Reg.No : GB6370321-70974  
\*Subject to availability

**5 LPM**

Oxygen Concentrator

**1 WEEK**

**RM120**

**1 MONTH**

**RM320**



MDA Reg.No : GB5929419-34859  
\*Subject to availability

**10 LPM**

Oxygen Concentrator

**<10 DAYS**

**RM600**

**1 MONTH**

**RM700**

2



\*Subject to availability

**10 L**

Oxygen Tank

**1 WEEK**

**RM40**

**1 MONTH**

**RM100**

3



MDA Reg.No : GC9264520-47073  
\*Subject to availability

Oximeter

\*Returnable deposit RM50 will be collected.

**1 WEEK**

**RM30**

**1 MONTH**

**RM50**

## OXYGEN CONCENTRATOR RENTAL PACKAGE

**1 MONTH**  
**RM400**

**SAVE RM20**

**1+2**



MDA Reg.No : GB6370321-70974

**2 MONTHS**  
**RM700**

**SAVE RM240**

**1+2+3**



MDA Reg.No : GB6370321-70974  
MDA Reg.No : GC9264520-47073

**2 MONTHS**  
**RM600**

**SAVE RM140**

**1+3**



MDA Reg.No : GB6370321-70974  
MDA Reg.No : GC9264520-47073

**6 MONTHS**  
**RM1,500**

**SAVE RM1,320**

**1+2+3**



MDA Reg.No : GB6370321-70974  
MDA Reg.No : GC9264520-47073

# 剛出院? BARU DISCAJ

## KAMI HANTAR DALAM SECEPAT MASA 4 JAM!

### 最快4小时送到你家! 让你不再无助

### ANDA TIDAK KESEORANGAN!

All these medical devices registered under Act 737

\*Important Notice : T&Cs Apply. | Images are for illustration purposes only. | Price subject to change without prior notice. | Installation Available For CIMB & Maybank Credit Card Holder Only. |

| 5% discount for both Hearing Aids and Powerlife Magnesium for Allianz Insurance customer. |



# 出租服务 SEWA



Recommended By  
The Malaysian Society  
Of Rehabilitation

**RM6,000  
TAX RELIEF**

Cost Of Basic Supporting  
Equipment For Disabled  
Self, Spouse, Child Or Parent.

## RENTAL Wheelchair

\*Returnable deposit **RM300** will be collected.

### MANUAL WHEELCHAIR



**MOVEN** Q05  
Lightweight

MDA Reg.No  
GMD6164489198A

\*Subject to availability

1 WEEK

**RM50**

2 WEEKS

**RM80**

**SAVE  
RM20**

4 WEEKS

**RM150**

**SAVE  
RM50**



**MOVEN**  
Supreme  
up to 130kg

MDA Reg.No  
GA607920-38659

\*Subject to availability

1 WEEK

**RM60**

2 WEEKS

**RM100**

**SAVE  
RM20**

4 WEEKS

**RM180**

**SAVE  
RM60**

### ELECTRIC WHEELCHAIR

**MOVEN** GO

1 WEEK

**RM280**

2 WEEKS

**RM500**

**SAVE  
RM60**

4 WEEKS

**RM900**

**SAVE  
RM220**



MDA Reg.No : GMD79630799918A  
\*Subject to availability

\*Returnable deposit **RM800** will be collected.  
\*For selected area only, ask us for more details.

### Contact Us For More Details

**019-984 2923**

Negeri Sembilan

**019-323 1923**

Melaka

**013-841 1923**

Kelantan

**019-901 4923**

Bintulu

**013-587 3923**

Kuching

**019-462 1923**

Muar

**013-288 1923**

Batu Pahat

**019-987 1923**

Pahang

**019-327 3923**

Penang

**013-584 1923**

Johor Bharu

**019-774 1923**

Terengganu

**019-274 1923**

KL/Selangor



SCAN & RENT NOW

All these medical devices registered under Act 737

# 出租服务 SEWA



Recommended By  
The Malaysian Society  
Of Rehabilitation

**RM6,000  
TAX RELIEF**

Cost Of Basic Supporting  
Equipment For Disabled  
Self, Spouse, Child Or Parent.

## RENTAL Suction Pump



MDA Reg.No : G810439228-54335  
\*Subject to availability

Helps to remove excessive mucus in airway.

1 WEEK

RM20

1 MONTH

RM50

2 MONTHS

RM90

SAVE  
RM10

3 MONTHS

RM120

SAVE  
RM30

+ RM100

For Purchase Of  
Suction Canister  
Due To Hygiene  
For The Patient.



\*Returnable deposit RM150 will be collected.

## RENTAL Hearing Aids



MDA Reg.No : G819503920-66643  
MDA Reg.No : G84715220-47072  
\*Subject to availability

**FREE  
7 Days Trial**  
Before Start Renting



Mimitakara

1 MONTH  
1 Piece

RM380

1 MONTH  
A Pair

RM570

SAVE  
50%  
For 2nd Piece

+ RM80

Accessories,  
System Tuning,  
Sterilisation

SAVE  
50%  
For 2nd Set

\*Returnable deposit RM800 will be collected.

# 刚出院? BARU DISCAJ

## KAMI HANTAR DALAM SECEPAT MASA 4 JAM!

最快4小时送到你家! 让你不再无助

ANDA TIDAK KESEORANGAN!

All these medical devices registered under Act 737

\*Important Notice : T&Cs Apply. | Images are for illustration purposes only. | Price subject to change without prior notice. | Installation Available For CIMB & Maybank Credit Card Holder Only. | 5% discount for both Hearing Aids and Powerlife Magnesium for Allianz Insurance customer. |



(Muscle Loss)  
**SARCOPENIA**

Can Be A Silent Killer After  
The Age Of **40?**

Come join us and be the one to experience this Move In The Park, an event to get a better move with healthy muscles. We offer valuable knowledge and information presented by Alpro Pharmacy's doctors, physiotherapists, and nutritionists.

Some of the key highlight activities include Muscle Strength Assessment, exciting strengthening exercises, having fun with our photo booth, and a special lucky draw prize.

Join us for an enlightening experience!



# MOVE IN THE PARK



## EVENT SCHEDULE

- 5:30 pm- Registration & Muscle Strength Assessment
- 6:00 pm- Doctor sharing & QnA
- 6:10 pm- Exercise with Physiotherapist
- 6:30 pm- Lucky draw
- 6:40 pm- Photo session

## VENUE

**D'Network @ Setia Eco Park**  
Jalan Setia Nusantara U13/17, Setia Alam, Seksyen U13,  
Setia Eco-park, 40170 Shah Alam, Selangor

## DATE & TIME

**22 JULY 2023 | Saturday | 5:30 pm**



Get **FREE**  
Goodie Bag  
(Worth RM50)



**019 - 750 0612**

**Sarcopenia** is a condition characterized by the age-related loss of muscle mass, strength, and function. It commonly affects older adults and can have significant consequences on physical health and overall well-being.

**Physiotherapy** plays a crucial role in managing sarcopenia by addressing the physical aspects of the condition. Physiotherapists closely monitor individuals' progress throughout their treatment. A series of physical assessment will be done by physiotherapists before any treatment given.

#### 4 Elements Of Physio Treatment For Sarcopenia

- 1 Personalized Muscle Strengthening Exercises**  
 This exercise is a specific exercise program to pin point the specific muscle group to stimulate muscle growth, improve muscle strength, and counteract muscle loss caused by sarcopenia. This personalized approach ensures that the treatment targets the areas of concern and optimizes outcomes.
- 2 Balance And Coordination Exercises**  
 Sarcopenia can contribute to balance deficits and an increased risk of falls. Physiotherapists include balance and coordination exercises in their treatment approach to improve postural control and reduce the risk of falls. These exercises help enhance balance, stability, and coordination, promoting safer mobility.
- 3 Functional Training**  
 Training 1 -2 muscles will not help. Physiotherapists will incorporate functional training exercises into the treatment plan to improve muscle function and enhancing the ability to perform daily activities with ease and independence. This aim to maintain their functional capacity and improves their quality of life.
- 4 Education And Lifestyle Modifications**  
 Physiotherapists provide education on lifestyle modifications that support muscle health.
  - Suggestion of appropriate support
  - Posture correction
  - Home exercises



## Home Physio Service

- Post-stroke
- Post-discharge/ Surgery Rehab
- Shoulder / Back / Knee Pain
- Post Covid-19 Lung Infection / Heart Surgery
- Parkinson's / Cerebral Palsy / Spinal Cord Injury
- Sports Injury Rehab

Normal Price  
**RM150** / Visit

**10+2 DAYS Package**

**RM130** /visit

( Visit once /day )

**SAVE RM240**

**20+5 DAYS Package**

**RM126** /visit

( Visit once /day )

**SAVE RM600**

Only for **FIRST** Time User

**CENTER** Physiotherapy

~~RM 110 + RM50~~  
Consultation Fee

**ONLY RM 85/visit** **SAVE RM75**

**HOME** Physiotherapy

~~RM 150 + RM50~~  
Consultation Fee

**ONLY RM 100/visit** **SAVE RM100**

#### Alpro Physio Centers

- Alpro Physio Seremban 2 • Alpro Physio Kuantan • Alpro Physio Ipoh
- Alpro Physio Senawang • Alpro Physio Kuching • Alpro Physio Bentong
- Alpro Physio Kota Kemuning • Alpro Physio Batu Pahat
- Alpro Physio Malim Jaya • Alpro Physio Butterworth

**BOOK NOW**

**019-275 9828**

#### \*Important Notice :

1. Service only available at physio enter and pharmacy outlet with community physiotherapist.
2. Coverage only within 10km from our center or outlet.

GKB **LION'S MANE** Mushroom



~~RM 198~~  
**RM 178**

**PWP**  
**RM 139**

With Purchase & Rent Rehab Silvercare Products Or Purchase Any Physio Treatment

Product Reg No : MAL2103627TC

**Valid Date : 01-Jul to 30-Sep-2023**



# Medical Mushroom, Lion's Mane Mushroom: Unveiling the Incredible Potential in Overcoming Stroke

Stroke is a debilitating disease that affects millions of people worldwide. It occurs when blood flow to the brain is disrupted, leading to the death of brain cells. In the continuous effort to advance the field of medicine, researchers are exploring alternative therapies to complement traditional stroke treatments. One natural remedy that has garnered attention is Lion's Mane mushroom (*Hericium erinaceus*). Known for its unique appearance and potential health benefits, Lion's Mane mushroom has shown promising results in supporting stroke patients during their recovery process.

## Understanding Stroke and Recovery

Before delving into the potential benefits of Lion's Mane mushroom for stroke patients, it is important to understand the various types of stroke and the recovery process. Stroke often leaves patients with physical, cognitive, and emotional challenges. The brain's ability to regenerate and form new connections, known as neuroplasticity, plays a crucial role in this recovery phase.

## Role of Lion's Mane Mushroom

Lion's Mane mushroom has been used for centuries in traditional Asian medicine due to its various beneficial properties. Recent scientific studies have revealed potential benefits for stroke patients, primarily attributed to the bioactive compounds present in the mushroom.

### Neuroregeneration

Lion's Mane mushroom contains compounds that stimulate the production of nerve growth factor (NGF). NGF is a protein essential for the growth, maintenance, and independence of neurons. By increasing NGF synthesis, Lion's Mane mushroom may enhance neuroregeneration and assist in repairing damaged brain cells after a stroke.

### Nerve Protection

The antioxidant and anti-inflammatory properties of Lion's Mane mushrooms are believed to protect brain cells from further damage caused by oxidative stress and inflammation. This effect can help reduce secondary brain injury and improve overall neurological outcomes in stroke patients.



### Cognitive Function

Cognitive impairment is common after a stroke. Lion's Mane mushroom has shown the potential in improving cognitive function. Studies indicate that its bioactive compounds may enhance memory, focus, and overall cognitive performance. These benefits can be particularly valuable for stroke patients facing cognitive challenges during their recovery.

### Mood Enhancement

Depression and anxiety are common issues among stroke patients. Lion's Mane mushroom may provide relief by modulating neurotransmitters and promoting a positive mood. Its potential antidepressant and anxiolytic effects can help reduce emotional distress and enhance the overall quality of life for stroke patients.

## Facts about Stroke



**RM36,400**  
Lifetime treatment cost for ischemic stroke patient



**92 Stroke case**  
An average admitted to hospitals daily.



**40% Stroke patients**  
are below 60 years old



**7 out of 10 patients**  
rely on others to carry out daily activities.





**Alpro ePharmacy**

# **WE DELIVER MEDICATION SAFETY**

\*T&Cs apply.



**Same-Day Delivery**  
As fast as within 30 mins\*



**FREE Consultation**  
Professional team comprising doctors & pharmacists



**Medication Safety**  
RM1,000,000 Product Liability Insurance



**Zero Contact Delivery**  
Reduce the risk of disease transmission



“ My daily medication is running out, but it is not convenient for me to go out...”

“ Worry not! **ALPRO ePHARMACY** is here for you!”

 Medication Consultation & Ordering

**019-6129006 | 019-7021923**



# oncohelp

by Alpro Pharmacy

If you are looking after someone with **cancer**, We understand this can sometimes affect your **emotionally**.

Get in touch with **oncohelp** team!



优惠化疗药物 • **Affordable** Chemo-Drug Supply

快速安全 • **Fast & Secure** Medication Delivery

经济补贴申请 • **Financial Aids & Subsidy** Application

康复计划 • **Recovery & Well-being** Holistic Support

Please call us

# 010-262 1923

✉ oncohelp@alpropharmacy.com

Daily,  
9am-9pm



Hi oncohelp  
I need help!

In partnership with :

**alpro foundation**  
Bringing hope, Changing lives

 National  
Cancer  
Society  
Malaysia  
*Giving Hope. Celebrating Life.*

**axios**  
ENABLING ACCESS TO HELP CARE

Sponsored by :

**alpro foundation**  
Bringing hope, Changing lives



**APPLY NOW**

## Do you know if there's anyone **who needs help?**

Are they on :



Tube Feeding?



Bedridden and are unable to eat solid food?



Got no income?



Scan For More Information

**We Can Sponsor!**

Just Call / WhatsApp Alpro Foundation

**019-388 1923**



\*T&C Apply.